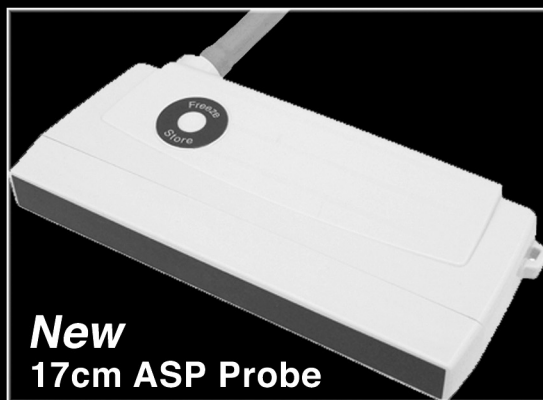


*Experience the Evolution....
Classic Ultrasound for the Digital Practice*



New
17cm ASP Probe

Digital Simplicity

19900 Mona Road, #105 • Tequesta, Florida 33469
(800) 722-6838 • (561) 746-9527 • info@classicmed.com
www.classicmedical.com

*Classic
Medical*

Since
1985

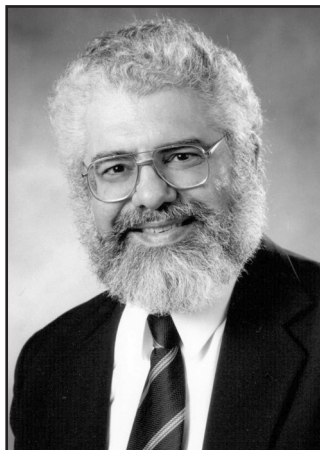


**Classic Digital
IMAGING**

Notebook Ultrasound

Welcome to the Joint Meeting of ADSA™-ASAS

Dave Barbano
ADSA President



David Buchanan
ASAS President



We're pleased you've joined us in Minneapolis to see old friends and make new ones and to exchange information with other scientists, as we provide the very best in professional networking and educational opportunities for dairy and animal science. This joint meeting is also a special year, as ADSA celebrates its Centennial.

We have an outstanding program this year that has something for everyone, including pre-meeting symposia, the Triennial Reproduction Symposium, "Dairy Foods: Advances in Cultured Foods," and "Disease Risk Management Tools for Beef and Dairy Producer: Train the Trainer." The Opening Session will highlight the 100 years of ADSA as well as the dairy industry.

Several activities are planned for the Centennial Celebration:

- Opening Session will focus on the history of ADSA and the dairy science industry and will feature some ADSA Pioneers as well as some young leaders of ADSA
- 18 ADSA Pioneers will open 18 oral scientific sessions with presentations
- Universities, companies, and dairy clubs will display posters sharing their organization's history of dairy
- A coffee table book recounting the history of ADSA and the dairy industry will be available for purchase
- A history of ADSA and the dairy industry will be presented on a DVD during the Opening Session, and will also be available to meeting attendees for purchase.

In an attempt to continue to make the meeting "attendee friendly," the structure of the meeting will follow the 2005 schedule: poster presentations from 7:30 to 9:30 am on Monday, Tuesday, and Wednesday mornings. Scientific sessions will be from 9:30 am to 12:30 pm on Monday and Tuesday, 10:30 am to 12:30 pm on Wednesday, 2:00 to 5:00 pm each afternoon, and 8:30 am to 12:30 pm on Thursday. The lunch break will be from 12:30 to 2:00 pm. We hope you will find this schedule works well with your overall meeting goals.

The award ceremonies are certain to be on the list of highlights again this year. We have again staggered the ceremonies. The ASAS ceremony will be held on Monday, July 10, and the ADSA ceremony will be held on Tuesday, July 11, to allow you to attend one or both. An old-fashioned ice cream social with birthday cake, open to all attendees, will be held Tuesday night after the ADSA award ceremony. Be sure to join us.

We invite all meeting attendees and their families to attend the Closing/International Reception on Wednesday, July 12.

The agenda for this year's meeting is a testament to the program organizers who have invested enormous amounts of time and effort to bring distinguished scientists in animal agriculture and animal food products from around the world to one place. In addition to several invited speakers, this program includes 30 symposia and almost 1,500 presentations. Many thanks to the ADSA-ASAS program committees and staff of ADSA, ASAS, and FASS for their hard work. Our program committee, Rick Grant (Chair), Jim Oltjen, and Maurice Eastridge, along with FASS staff members, Jennifer Gavel, Cara Tharp, Keely Roy, Louise Audrieth, Ted Veatch, and Kevin Wolter (to name just a few), did a fantastic job. Special thanks go out to the Executive Directors of ASAS and ADSA Meghan Wulster-Radcliffe, Paula Schultz, Peter Studney, and Brenda Carlson prior to her retirement, for keeping everything headed in the right direction.

Thank you for participating in the ADSA-ASAS joint meeting and for making it a success.

Table of Contents

Welcome Letter	1
General Meeting Information	3
Headquarter Hotels	4
Transportation	7
Special Events	8
Award Donors	11
Minneapolis Information	12
Exhibit Floor Plan	15
Exhibit Directory	17
Corporate Sustaining Members	31
Schedule of Events	32
ADSA SAD Schedule of Events	37
Downtown Minneapolis Housing Map	38
Convention Center and Hotel Maps	40
Meeting Sponsors	44
Scientific Program Table of Contents	45
Scientific Sessions	53
Author Index	154
Program at a Glance	172

<http://adsa.asas.org/2006>

IMPORTANT MESSAGE

In the event that protestors interrupt your meetings, please ignore them. Their goal is to attract attention. Any attention you give them will only help them. Please ignore them and continue your regular business. Convention staff has a plan in place to handle these situations, and they depend on your cooperation. If the media approaches you for an interview, please politely refuse and direct them to the registration desk where spokespersons are available.

Thank you for your cooperation.

Survey of Meeting Attendees

The 2006 program committee has provided meeting attendees the opportunity to help improve future joint meetings. A meeting survey will be available on line during the meeting. Please take advantage of the Cyber Café in the exhibit hall to log on and complete the survey. We appreciate your feedback!

Strategic Planning Member Survey

ASAS is in the process of creating a new strategic plan; as part of acquiring data for the strategic plan we are asking as many people as possible to complete the ASAS Membership Survey. The survey is open to both ASAS members and nonmembers. The survey can be completed at dedicated computers identified by signs near the registration desk, in the pre-load room, and in the Cyber Café. Each person that completes the survey will receive a free gift. Please take a few minutes to contribute to the drafting of the new ASAS strategic plan.

General Meeting Information

Location

The Minneapolis Convention Center is located in the heart of downtown Minneapolis, connected to all major hotels, shopping, and restaurants by an enclosed skywalk. Minneapolis offers participants a compact downtown with first-class hotels, major retail stores and a variety of dining and nightlife options all within easy walking distance of the Minneapolis Convention Center. Meeting rooms will be equipped for electronic presentations and pre-loaded sessions. The Cyber Café will be available for attendees to keep up-to-date while at the meeting.

Schedule of Events

The meeting will kick off Sunday evening with the opening session and reception and then continue with 3 ½ days of scientific sessions ending on Thursday at noon. The complete schedule of events may be found on page 32 of this program or online at <http://adsa.asas.org/2006>.

Program Format for 2006

Poster Sessions	7:30 am - 9:30 am
Scientific Sessions	9:30 am - 12:30 pm
Lunch Break	12:30 pm - 2:00 pm
Scientific Sessions	2:00 pm - 5:00 pm

Registration Hours

Registration will be located on the Mezzanine Level of the Minneapolis Convention Center. Registration hours for the 2006 Joint Annual Meeting will be as follows:

Saturday, July 8 (pre-registered only)	12:00 pm - 5:00 pm
Sunday, July 9	7:00 am - 7:00 pm
Monday, July 10	6:30 am - 4:00 pm
Tuesday, July 11	7:00 am - 3:30 pm
Wednesday, July 12	7:00 am - 3:00 pm
Thursday, July 13	8:00 am - 10:00 am

Headquarter Hotels

Hyatt Regency Minneapolis - ASAS HQ
1300 Nicollet Mall
Minneapolis, MN 55403
Phone: (612) 370-1234; Fax: (612) 370-1463

Hilton Minneapolis - ADSA HQ
1001 Marquette Avenue
Minneapolis, MN 55403
Phone: (612) 376-1000; Fax: (612) 397-4871
Doubletree Guest Suites Minneapolis - Student HQ
1101 LaSalle Avenue
Minneapolis, MN 55403
Phone: (612) 332-6800; Fax (612) 332-8246

Official Meeting Hotels

Millennium Hotel Minneapolis
1313 Nicollet Mall
Minneapolis, MN 55403
Phone: (612) 332-6000; Fax: (612) 359-2164
Best Western Normandy Inn
405 S. 8th Street
Minneapolis, MN 55404
Phone: (612) 370-1400
Embassy Suites Hotel
425 S. 7th Street
Minneapolis, MN 55415
Phone: (612) 333-3111

Important Phone Numbers

Registration Desk	(612) 335-6663
Hilton Minneapolis	(612) 376-1000
Hyatt Regency Minneapolis	(612) 370-1234
Millennium Minneapolis	(612) 332-6000
Doubletree Guest Suites Minneapolis	(612) 332-6800
Minneapolis Convention Center	(612) 335-6000
Minneapolis Convention and Visitors Association	(612) 767-8000
Weather, Time, and Temperature	(763) 512-1111

Meeting Information

Media Check-in

Please check in at the Registration Desk on the Mezzanine Level of the Minneapolis Convention Center.

Speaker Ready Room

The Speaker Ready Room is located in Room M101 B on the Mezzanine Level of the Minneapolis Convention Center. This room will be available for speakers from 7:00 am to 5:00 pm on each day of the meeting.

Business Center

For your convenience, FedEx Kinko’s is located on the main level of the Minneapolis Convention Center directly behind the information booth. The store is open Monday through Friday from 7:00 am until 6:00 pm.

Hospitality Lounge

The hospitality lounge will be located in room M101 A. This lounge will offer attendees an area to relax, network and catch up with old friends. The hospitality lounge is a great place to plan to meet when you are looking for one central location for a group to leave from.

Notice to all Oral Presenters and Invited Speakers

Please note that all session rooms will be equipped with a computer and LCD projector. All oral presentations and invited speaker presentations will be pre-loaded prior to the meeting.

Poster Presentations

We have dedicated a two-hour block each morning to poster presentations. The “open posters” will be from 7:30 am to 9:30 am Monday, Tuesday, and Wednesday in the Convention Center, Exhibit Hall A. Oral sessions will begin at 9:30 am on Monday and Tuesday, 10:30 am on Wednesday, and 8:30 am on Thursday.

Each poster presentation will be available for public viewing for the entire day, with the presenting authors present during the “open posters” time (7:30 am to 9:30 am). All posters should be mounted on the board one-half hour prior to the beginning of the day’s session (posters open at 7:30 am so posters should be mounted on the board by 7:00 am). The exhibit hall will open daily at 6:15 am from Monday, July 10 through Wednesday, July 12. Posters must be removed by 5:30 pm each day. Any posters remaining after 5:30 pm will be removed by the convention center staff and discarded.

The poster board surface area is 48 inches high and 96 inches wide; use of this space is dictated by the presenter with the following exceptions: the top of the poster space should include the abstract number, title, authors, and affiliations. The lettering for this section should be at least 1 inch high.

Locating the Correct Poster Board

The poster board number corresponds to the abstract number as noted in the program. Each poster board will have a number that corresponds to the abstract number in the program. Monday posters will have an “M”, Tuesday posters a “T”, and Wednesday posters a “W” preceding the board number.

ADSA Centennial Posters

Convention Center, Exhibit Hall A

As part of ADSA's Centennial Celebration, Departments of Dairy Science, Animal Science, and Food Science; government institutions in the US and Canada; Dairy Clubs; and ADSA Sustaining Members will have posters on display during the meeting. These posters will showcase the history, accomplishments, and contributions from their institution or organization from the past 100 years.

The Centennial Posters will be on display from Monday, July 10, through Wednesday, July 12. A reception will be held on Monday, July 10, from 4:00 to 5:00 pm near the Centennial Posters in the Exhibit Hall.

ARPAS Continuing Education Units

The ADSA-ASAS Joint Annual Meeting has been approved for up to 28 continuing education units (CEUs) for the American Registry of Professional Animal Scientists certification requirements. Check the schedule of events for times and location of the ARPAS exams.

AAUSB Registry of Approved Continuing Education (RACE)

The American Association of Veterinary State Board has approved the ADSA-ASAS Joint Annual Meetings for continuing education credits for veterinarians and veterinary technicians. Thirty-seven total contact hours of continuing education credits are available with the potential for a veterinarian or a technician to earn a maximum total of 17 credits. Symposia eligibility and associated credits for the symposia are listed with the individual symposia descriptions.

Placement Center

The Placement Center is located in Exhibit Hall A. The job announcements and resumes will be organized into the following categories for posting and distribution: Animal Behavior & Well-Being, Animal Health, Animal Breeding, Companion Animals, Extension, Food Safety, Food Science, Forages & Pastures, Genetics, Growth & Development, International Animal Agriculture, Lactation, Meat Science & Muscle Biology, Non-ruminant Nutrition, Nutrition, Pharmacology & Toxicology, Physiology & Endocrinology, Production & Management, Ruminant Nutrition, and Teaching.

Cyber Café

Keep in touch with work, family and friends during the ADSA-ASAS Joint Annual Meeting at the Cyber Café. Located in the exhibit hall on the lower level of the Minneapolis Convention Center, the Cyber Café is available to all meeting attendees.

Wireless internet access is available in the main lobby of the Minneapolis Convention Center. The cost for access is \$5.95 for one hour and \$15.95 for 24 hours.

TRANSPORTATION

SuperShuttle

SuperShuttle of Minneapolis/St. Paul, Inc. provides an opportunity to save money and time when you arrive in Minneapolis. SuperShuttle service provides convenient, reliable, and economical transportation between the airport and all major hotels with departures from the airport every 30 minutes and departing from major hotels every 30 minutes. The cost is \$15.00 one-way or \$26.00 for a round trip. No reservation is needed. A staffed desk is located on the right side of the Ground Transportation Center, one level below baggage claim in the Minneapolis St. Paul Airport.

If you are in need of accessible service, please make a reservation by calling 1-800-BLUEVAN.

Taxi Cabs

Several taxi companies serve the Minneapolis/St. Paul International Airport and all points throughout the Twin Cities. The one-way fare from the airport to downtown Minneapolis is approximately \$25.00 and should take 15 - 20 minutes. Taxicabs can be hailed from the lobby of your hotel.

Light Rail Transit

The Hiawatha Light Rail Transit System offers transportation to 17 different stops between the Mall of America, the Minneapolis/St. Paul Airport, and downtown Minneapolis. The trains run approximately every ten minutes, and the fare is \$1.75 during rush hour and \$1.25 at all other times. Visit the Metro Transit's website at <http://www.metrotransit.org/rail>.

BIG LEAGUE

Go ahead – swing for the fences. With SoyPLUS® on your team, you have the power to break records. It's the bypass protein solution that's also a big hit in digestibility. With more protein available for absorption, your dairy herd will get more of the benefits. Plus, it's got all the bases covered with its high-energy oil source and a healthy, all-natural formula. SoyPLUS...reaching new milestones in milk production.

MAKE HISTORY

Your own records can be broken today.

Contact West Central at 800.843.4769 or www.soyplus.com.

SoyPlus|SoyChlor, dairy nutrition products of West Central.



Special Events

Opening Session

Sunday, July 9

7:00 p.m. to 8:30 p.m.

Convention Center, Auditorium

ADSA Centennial - Reflecting Back to Envision the Future

The 2006 Opening Session is not only the start of the Joint Meeting but is also the kick-off for ADSA's Centennial celebration. The Opening Session will feature ADSA members reflecting on the first 100 years of ADSA and the current opportunities for ADSA as it moves forward. Speakers will address the rich heritage of ADSA with a look at the advancements in production and processing of milk.

7:00 - Welcome to the Centennial - Dr. David Barbano, ADSA President

Reflecting Back to Envision the Future - Dr. Ken McGuffey

The World of Dairy Science

Reflecting Back - Dr. John Campbell and Dr. Robert Marshall

Favorite ADSA Memories - Dr. Robert Sellars and Dr. Ken McGuffey

Envisioning the Future - Ms. Rebekah Blades, Dr. Robert Collier, and Dr. Bruce German

8:15 - Announcements and Closing Remarks - Dr. David Buchanan, ASAS President

Opening Reception

Sunday, July 9

8:00 pm - 10:00 pm

Convention Center, Ballroom A

End the evening by joining us in the ballroom foyer after the Opening Session to socialize with colleagues and friends.

ADSA Town Hall Meeting

Monday, July 10

5:00 pm - 6:00 pm

Convention Center, Room 101 H-I

The ADSA Board of Directors invites attendees to a Town Hall Meeting on Monday, July 10, from 5:00 pm to 6:00 pm in the Convention Center, Room 101 H-I. The Town Hall Meeting provides an opportunity for attendees/members to express concerns and praises for the Association. The ADSA Board also seeks members' vision of ADSA's future needs and directions. This is an informal event, and all registrants interested in ADSA are welcome.

ASAS Awards Program

Monday, July 10

7:00 pm - 8:30 pm

Hyatt Regency, Nicollet Ballroom

All meeting participants, families, and friends are welcome to attend the 2006 ASAS Awards Program. Please join us at this special event to congratulate the 2006 ASAS award winners at the Hyatt Regency on Monday, July 10.

Dance Party with the Johnny Holm Band***Monday, July 10******8:30 pm - 12:30 am******Hilton Minneapolis, Salons DEFG******Ticket Price: \$5.00***

Rock the night away with old and new friends and the Johnny Holm Band. One of the most requested bands in the upper Midwest, the Johnny Holm Band dedicates each show to the fans, and they do most of the entertaining. There's never a dull moment when this band hits the stage and rocks, picks, and thunders along non-stop from the first song to the last laugh. Cash bar, free soda bar, and free snacks will be available. This event is open to all meeting attendees, including students, advisors, and anyone else looking for a fun evening. *Sponsored by the University of Minnesota Gopher Dairy Club, ADSA, and ASAS.*

5K Fun Run***Tuesday, July 11******6:15 am******Loring Park, Meet at the Minneapolis Convention Center***

Join in the fun on Tuesday, July 11, at 6:15 am. Enjoy beautiful Loring Park in downtown Minneapolis while running this 5-kilometer course. T-shirts and refreshments will be provided and medals will be awarded.

Feedstuffs Seminar***Tuesday, July 11******8:00 am - 9:00 am******Hilton Minneapolis***

Radio broadcaster and Feedstuffs columnist Trent Loos will talk about the threats facing animal agriculture today and provide insight on what can be done to bridge the growing gap between food producers and consumers.

ASAS Northeast Section and ADSA Northeast Branch Business Meeting and Awards Luncheon***Tuesday, July 11******12:30 pm - 2:00 pm******Convention Center, 200J******Pre-registration is required***

The ASAS Northeast Section and ADSA Northeast Branch will hold their annual Business Meeting and Awards Luncheon on Tuesday, July 11. Members are invited to attend and catch up with other members of the section. This is a good time to honor the NE award winners and the Graduate Student Competition Winners.

Spouses' Event***Tuesday, July 11******2:00 pm - 3:30 pm******Brit's Pub******Pre-registration is required and is limited to 40 attendees***

Join us at Brit's pub on Tuesday, July 11, for an authentic English high tea. A selection of tea sandwiches, fresh fruit, imported English cheeses; fresh baked buttermilk and blueberry scones; Devonshire cream, marmalade; and a variety of teatime sweets will be served.

***ASAS JAS Forum
Tuesday, July 11
3:30 pm - 5:30 pm
Convention Center, M100A***

Meeting attendees are invited to join the editor-in-chief of JAS and journal staff from HQ for an open forum on the journal. The association encourages you to bring forward questions, concerns, and praises to this informal event. We hope to see you there!

***ADSA Awards Program
Tuesday, July 11
7:00 pm - 8:00 pm
Hilton Minneapolis, Salon EFG***

All meeting participants, families, and friends are welcome to attend the 2006 ADSA Awards Program. Please join us at this special event in congratulating all of our award winners on Tuesday, July 11, at the Hilton.

***2006 ADSA-ASAS Ice Cream Social
Tuesday, July 11
8:15 pm - 9:30 pm
Hilton Minneapolis, Salon D***

The ADSA-ASAS Ice Cream Social will be held on Tuesday, July 11, from 8:15 pm to 9:30 pm at the Hilton. All meeting participants, families, friends, and award donors are invited to join us for the joint Ice Cream Social.

***ADSA Foundation Auction & Raffle
Tuesday, July 11
8:15 pm - 9:30 pm
Hilton Minneapolis, Salons DEFG***

This year, the ADSA Foundation Auction and Raffle will honor the American Dairy Science Association™ in its Centennial year by encouraging donors to give auction items that relate to the history of the organization and to the dairy industry. More than 50 items have already been donated, including a handmade quilt commemorating ADSA's 100th anniversary by quilt artist Elaine Baumgardt, an Indy 500 Race Weekend; dairying books dating back to the early 20th century including a 1917 Henry & Morrison book on Feeds and Feeding; a hand-carved cow, DeLaval milk separator collectibles, an assortment of fine prints and paintings, milk and cream bottles, a Hoard's Creamery butter container, and much more. To donate an item or view the latest list of items, visit the auction web site at http://www.adsa.org/foundation%20auction%202006/Auction_Items.htm.

***Michigan State University Reception
Tuesday, July 11, 2006
8:00 pm - 10:00 pm
Hilton Minneapolis, Duluth Room***

Michigan State University invites you to their "100 Years of Animal Science" reception on Tuesday, July 11, 2006, from 8:00 pm until 10:00 pm at the Hilton. All meeting participants, families, and friends are welcome to attend. Don't miss this opportunity to catch up with old friends and make some new acquaintances. The evening promises to be one to remember.

***Closing/International Reception
Wednesday, July 12
4:30 pm - 6:00 pm
Convention Center/Ballroom B***

All meeting participants, families, and friends are welcome to attend the Closing/International Reception on Wednesday July 12 from 4:30 pm to 6:00 pm. Again this year, attendees will have the opportunity to indicate their home affiliate on a world map; check the exhibit hall for the poster board before this reception.

ADSA-ASAS Award Donors

ADSA

Alltech, Inc.
 ABS Global, Inc.
 ADSA Foundation
 American Dairy Science Association
 American Feed Industry Association
 Cargill Animal Nutrition, Inc.
 DMI, Inc.
 Danisco USA, Inc.
 DeLaval Inc.
 Elanco Animal Health
 Hoard's Dairyman
 International Dairy Foods Association
 Land O'Lakes, Purina Feed LLC
 Merial Limited
 National Milk Producers Federation
 Nutrition Professionals, Inc.
 Pfizer Animal Health, Inc.
 Pioneer Hi-Bred International, Inc.
 West Agro, Inc.

ASAS

ABS Global, Inc.
 American Feed Industry Association
 American Society of Animal Science
 Center for Regulatory Services, Inc.
 DSM Nutritional Products, Inc.
 Elanco Animal Health
 L. E. Casida Fund
 Land O'Lakes, Purina Mills LLC
 Merial Limited
 Monsanto Company
 Morrison Award Fund
 Omega Protein Corporation
 Pfizer Animal Health
 The Iams Company

Thank you for your support!



Minneapolis Overview

Minneapolis is a world-class city, with fabulous shopping, dining, and entertainment. Getting around is a snap using light rail transit, with stops in downtown, the airport, and Mall of America. No matter what the weather, easily travel between many hotels and attractions using the skyway system.

Diverse ethnic options line Nicollet Avenue's "Eat Street", and the Warehouse District is the center of downtown's nightlife, bursting with restaurants and nightclubs.

The music and theater scene is top-notch, with everything from Broadway shows to local and national bands. Tony Award-winners Theatre de la Jeune Lune, The Children's Theatre Company, and the Guthrie Theater all call Minneapolis home, as well as three historic theaters that make up the Hennepin Theatre District, and orchestra and opera groups perform throughout the year.

Art, science, and history are on display at over 57 museums in the city and well-known places such as Walker Art Center and Weisman Art Museum that have made their mark nationally.

Shop along Nicollet Mall at the flagship Marshall Field's store or visit the largest mall in the country, Mall of America. Plus, there's no sales tax on apparel, so get ready to save.

Visit the historic Riverfront District, where Minneapolis got its start in the flour milling industry. Experience the City of Lakes at its best and walk or bike on over 50 miles of trails along the Grand Round Scenic Byway or enjoy paths winding through the city along the Mississippi River.

Currency Exchange

Minneapolis/St. Paul International Airport offers a currency exchange service (612-726-5187) from 6:00 am - 8:00 pm Monday through Saturday and from 8:00 am - 8:00 pm on Sunday. The currency exchange is located in the airport Business Center on the upper level of the main terminal between doors 5 and 6 across from the Northwest Airline ticket counter.

Currency Exchange is also available in downtown Minneapolis at
Wells Fargo
6th Street & Marquette Avenue
612-667-1234
Monday through Friday 7:30 am - 5:00 pm

Minneapolis Tour Options

With the abundance of things to do in Minneapolis, there will be no formal tours offered during the 2006 ADSA-ASAS Joint Annual Meeting. Listed below are just a few of the exciting options for you to consider while you are in Minneapolis.

Segway Tours (800) 749-5584, www.humanonastick.com

Travel back in time on a Magical History Tour™! Ride a Segway as you enjoy the history of the Minneapolis Riverfront area from 10,000 BC to present without breaking a sweat. Let the Segway do the work as you cover several miles accompanied by a professional guide. Allow your guide to assist you in experiencing various eras of the river while stopping frequently at historical sites, including the Stone Arch Bridge, Mill Ruins Park, Nicollet Island, and many more wonderful Minneapolis sights. Every Magical History Tour™ starts with training on how to operate a Segway safely and then a 5-7 mile beautiful historic route. The whole experience will last around 3 hours and include a stop for refreshments at the Mill City Museum. Ages 13-80 are welcome with a weight restriction of 280 lbs. All riders are required to wear helmets.

RiverCity Trolley Tours (612) 378-7833, www.rivercitytrolley.org

Climb aboard! Vintage-looking trolleys beckon you back to a time when streetcars roamed thousands of miles of track linking America's city streets. With the clank of the bell, you're off on a 60-minute excursion through Minneapolis while entertaining conductors tell colorful stories of times and places gone by and highlighting the hot spots of today. And because you can get off and on at any point along the route, it's a fun mode of transportation while you enjoy a day on the town. The trolley leaves from the Minneapolis Convention Center every 30 minutes. The last tour leaves the Convention Center at 3:00 pm.

Riverfront Cruises (612) 378-7966, www.minneapolisqueen.com

The Minneapolis Queen, a brand new paddle wheeler, offers cruises on the Mississippi River through historic downtown Minneapolis. We are conveniently located at Boom Island Park in the heart of the historic Minneapolis Riverfront District. Our brand new paddle wheeler is a perfect way to experience the history of beautiful downtown Minneapolis.

Minnesota Zoo (800) 366-7811, www.mnzoo.com

With over 2,000 animals to visit, a working farm, an IMAX theater for spectacular flicks, a monorail to zip around the zoo, and numerous educational programs, the Minnesota Zoo is sure to keep the whole family entertained.

Mill City Museum (612) 341-7555, www.millcitymuseum.org

An attraction for all ages, Mill City Museum chronicles the flour milling industry that dominated world flour production for roughly a half-century and fueled the growth of Minneapolis, recognized across the nation and around the world as "Mill City." Built within the ruins of a National Historic Landmark—the Washburn A Mill—the museum provides a multi-sensory, interactive journey. The story of flour milling—and its impact on Minneapolis, the nation and the world—comes to life through the eight-story Flour Tower and other hands-on exhibits.

American Swedish Institute (612) 871-4907, www.americanswedishinst.org

The American Swedish Institute, founded in 1929 by Swan J. Turnblad, is a historic house/museum offering a variety of programs designed to celebrate Swedish culture. The Turnblad mansion, which houses the Institute, is on the National Register of Historic Places. It is the only castle in the Twin Cities.

Minnesota Children's Museum (651) 225-6000, www.mcm.org

The mission of the Minnesota Children's Museum is to spark children's learning through play. It's a place where infants through children ten years old and adults can touch, climb, splash, crawl, push, pull, and press it all in seven galleries packed with extraordinary hands-on adventures. A must see for young families visiting Minneapolis!

Walker Art Center (612) 375-7600, www.walkerart.org

The Walker Art Center is a place where everything comes together—where paint meets pixels and anime meets matinee. With a suite of new galleries, a refurbished cinema, two restaurants by Wolfgang Puck, a new shop and library, a state-of-the-art theater, and much more, it's the place where art meets life. Opened in April 2005, the new Walker Art Center includes increased indoor and outdoor facilities, allowing us to share more of our resources—from objects in the permanent collection to books in our library to an inside view of the artist's own creative process—with our growing audience. Increasingly, this ability to link ideas from different disciplines and art forms is seen as a model for cultural institutions of the future. A key aspect of the design is a "town square," a sequence of spaces that, like the Minneapolis Sculpture Garden, draws people for informal conversation, interactive learning, and community programs.

The Mall of America (952) 883-8800, www.mallofamerica.com

One of the most-visited tourist destinations in the world, the Mall of America offers something for everyone with 520 stores, 50 restaurants, and attractions galore! The Mall of America is only 15 minutes from downtown Minneapolis and is accessible via the Hiawatha Light Rail System.

The Minneapolis Institute of Art (612) 870-3131, www.artsmia.org

The Minneapolis Institute of Arts houses more than 100,000 objects from diverse cultural traditions spanning 5,000 years of world history. The Institute is a comprehensive and encyclopedic fine arts museum serving the Twin Cities and the Upper Midwest and is recognized internationally as one of the great museums in America. The museum has free general admission every day.

Baker National Golf Course (952) 473-0800, www.threeriversparkdistrict.org

This Golf Digest four-star and top-50 value golf course deserves recognition for more than just its quality of play and low green fees. This municipal Minneapolis golf course received the Links Magazine Audubon International “1996 Best of Golf” award in the category of golf and the environment. Green fees are in the \$22-\$30 range. The course is about 20 miles from downtown Minneapolis.

A black and white photograph of a woman in a field, looking through a doorway. The field is filled with low-lying plants, and the background shows a horizon with trees under a cloudy sky. The woman is wearing a dark dress and is looking out from a white-framed doorway. The overall mood is contemplative and hopeful.

MONSANTO
imagine™



Imagine
innovative
agriculture
that
creates
incredible
things
today.

learn more at monsanto.com

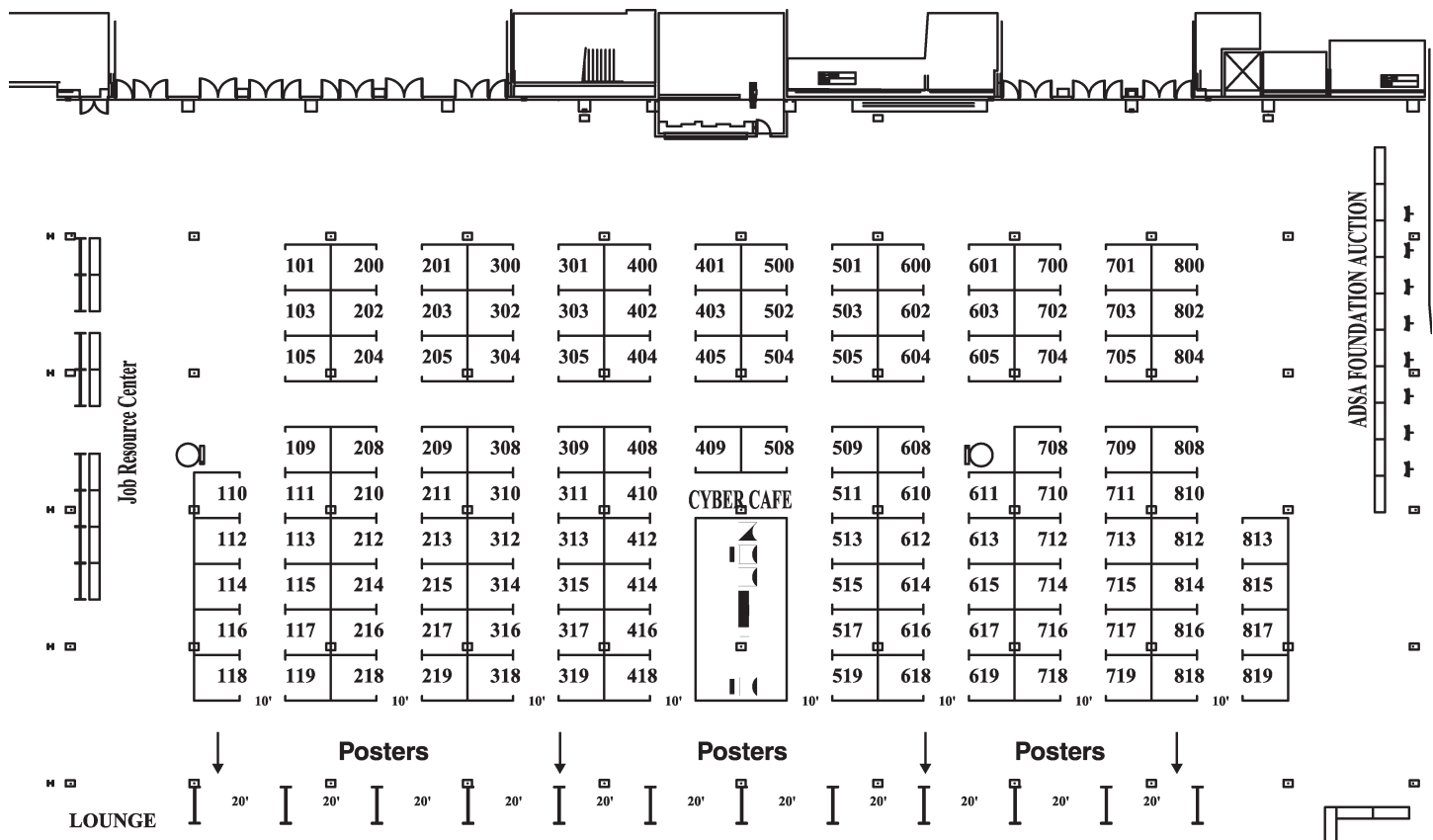
Monsanto, imagine and the vine symbol are trademarks of Monsanto Technology, LLC
© 2006 Monsanto Company

Exhibit Schedule

Exhibit Hours:

Sunday, July 9, Exhibitor Setup	8:00 am - 5:00 pm
Monday, July 10, Exhibits Open	7:30 am - 5:00 pm
Tuesday, July 11, Exhibits Open	7:30 am - 5:00 pm
Wednesday, July 12, Exhibits Open	7:30 am - 5:00 pm
Wednesday, July 12, Exhibitor Teardown	5:30 pm - 8:00 pm

Exhibit Hall Floor Plan



Guide to Exhibitors/Booth Numbers

AAALAC International	209	Feed Management Systems, Inc.	600
Acadian Agritech	501, 503	FeedAC	710
Adisseo	103	FEEDSTUFFS	402
ADSA Centennial Booth	714	GrowSafe Systems	505
ADSA-ASAS	715, 717	GTC Nutrition	303
Ag Processing/Amino Plus	602	H.J. Baker & Bro., Inc.	804
Alltech	109	Hoard's Dairyman	311
Aloka Ultrasound	409	Ice Robotics Limited	509, 608
American Registry of Professional Animal Scientists (ARPAS)	712	International Ingredient Corporation	700
Analab	313	Iowa Soybean Association	604
ANKOM Technology	105, 204	Midland BioProducts Corporation	513
APC, Inc.	418	MS Specialty Nutrition/MSB	605, 704
Arm & Hammer Animal Nutrition	205, 304	National Institute for Animal Agriculture	508
Balchem	305, 404	Nouriche Nutrition, Ltd.	702
Bar Diamond, Inc.	217	Novus International, Inc.	611, 613
BIOMIN	408	Omega Protein, Inc.	200
Blackwell Publishing	117	Partners Advantage Representing: Agrilience, Land O' Lakes Purina Feed & Croplan Genetics	302
Cabi Publishing	416	PetAg, Inc.	301
Classic Ultrasound Equipment	308	Poultry Protein & Fat Council	309
Cotton Incorporated	319	Prentice Hall	213
Council for Agricultural Science & Technology (CAST)	716	Prince Agri-Products, Inc.	405, 504
Cumberland Valley Analytical Services, Inc.	310	Probiotech International, Inc.	219
Dairy Records Management	101	Quality Management, Inc.	412
Dairyland Laboratories, Inc.	202	Saf Agri/Lesaffre Feed Additives	312
Dalex Computer Systems	203	SoyBest	201, 300
Degussa Corporation	705	Trouw Nutrition USA	218
Diamond V Mills	515, 517, 519	Unity Scientific, Inc.	603
Distillers Grains Technology Council	410	USDA - Animal Welfare Information Center	211
DSM Nutritional Products	119	Varied Industries Corporation	601
Elanco Animal Health	708	Virtus Nutrition	216
ELSEVIER	400	West Central	818
FDA - Center for Veterinary Medicine	215	Western Yeast Company	414
Federation of Animal Science Societies (FASS)	711, 713	Zinpro	401, 500, 403, 502

**A special thank you to our
2006 ADSA-ASAS
Joint Meeting Exhibitors!**

Exhibit Directory

AAALAC

11300 Rockville Pike

#1211

Rockville, MD 20852

Phone: 301-231-5353; Fax: 301-231-8282

www.aalac.org

Booth(s): 209

AAALAC International offers accreditation, assessment, and education services for agricultural animal research programs. Earning accreditation demonstrates dedication to responsible animal care and assures research partners, funding sources, and the public of a commitment to quality research and good science. More than 700 institutions in 28 countries have earned AAALAC accreditation.

Acadian Agritech

30 Brown Ave.

Dartmouth, NS B3B1X8

Phone: 902-468-2840; Fax: 902-468-3474

www.acadianagritech.com

Booth(s): 501, 503

Tasco® is a natural feed ingredient made of proprietary processed *Ascophyllum nodosum*. Tasco® is generally regarded as safe (GRAS) in animal feeds. There are no withdrawal times, and it is legal to feed in all classes of livestock including lactating dairy cows. Tasco® is backed by more than 15 years of research that shows feeding Tasco® to livestock can improve production and producer profitability.

Adisseo

3480 Preston Ridge Rd.

Suite 375

Alpharetta, GA 30005

Phone: 404-580-8951; Fax: 678-337-1602

www.adisseo.com

Booth(s): 103

Adisseo offers a wide range of feed additives in various forms, adapted for all types of feed and for all species. Our products include Microvit® (full line of vitamins), Rhodimet® (methionine in both powder and liquid analog forms), MetaSmart® and Smartamine® (ruminant methionine), and Rovabio® (enzymes in both liquid and powder forms).

Ag Processing Inc./Amino Plus

PO Box 2047

Omaha, NE 68103-2047

Phone: 402-492-3309; Fax: 402-496-6686

www.agp.com

Booth(s): 602

AminoPlus® is a natural all soybean-based ingredient used to enhance the productivity of dairy cattle. AGP's patented technology takes advantage of highly palatable soy proteins to supply a high level of highly digestible essential amino acids to the small intestine without the addition of chemicals or non-soybean components.

Alltech

3031 Catnip Hill Pike

Nicholasville, KY 40356

Phone: 859-887-3251; Fax: 859-887-3256

www.alltech.com

Booth(s): 109

For more than 25 years, Alltech has been researching and providing all-natural nutritional solutions that benefit animal health, performance and productivity. Alltech's cutting-edge brands (Yea-Sacc®1026, Sel-Plex®, Bio-Mos®, Mycosorb®*, MTB-100®, Bio-plex® and Sil-All®) set a unique example of how all-natural technologies backed by dedicated research can move the industry forward.

Aloka Ultrasound

10 Fairfield Blvd.

Wallingford, CT 06492

Phone: 800-872-5652; Fax: 203-269-6075

www.aloka.com

Booth(s): 409

ALOKA has a full range of ultrasound systems for all veterinary applications. The super premium Alpha 10 and premium Alpha 5 offer superb image quality for the most challenging cases. We also offer more cost-effective solutions in the SSD1400, SSD3500, and SSD4000. Our two portables, the SSD500 and SSD900 are reliable, rugged systems that are ideal for large animal reproduction, equine tendons, and, in the case of the 500, food-animal live carcass evaluation.

Analab**18246 Waller Rd.****Fulton, IL 61252****Phone: 800-435-9560; Fax: 815-589-4565****www.analabtest.com****Booth(s): 313**

Analab Laboratory had been providing testing services since 1972. As a fully certified laboratory, Analab offers a full range of chemical, biological, and microbiological testing to the livestock and seed industries. Samples tested at Analab vary from animal feeds, forages, silages, grains, manure, and urine. Analab is dedicated to satisfying our clients through accurate, precise, and timely analysis.

ANKOM Technology**2052 O'Neil Road****Macedon, NY 14502****Phone: 315-986-8090; Fax: 315-986-8091****www.ankom.com****Booth(s): 105, 204**

ANKOM Technology manufactures and markets instrumentation for the food and feed industry. ANKOM is best known for the development of Filter Bag Technology (FBT) for determining Acid, Neutral and Crude Fiber in feedstuffs, as well as Crude and Total Fat in feeds and foods. ANKOM has products supporting *in vitro* digestibility, *in vitro* gas production and *in situ* digestibility. ANKOM products are in use in over 80 countries around the world.

APC, Inc.**2425 SE Oak Tree Ct.****Ankeny, IA 50021****Phone: 515-289-7673; Fax: 515-289-4360****www.functionalproteins.com****Booth(s): 418**

APC, Inc. is a world leader in the development of functional proteins for animal health and nutrition. For twenty-five years, APC's research investments have yielded safe, effective products to improve animal performance in the swine, ruminant, aquaculture, companion animal, and poultry industries.

Arm & Hammer Animal Nutrition**469 N. Harrison****Princeton, NJ 08543****Phone: 607-279-7685; Fax: 607-497-7176****www.ahdairy.com****Booth(s): 205, 304**

Arm & Hammer Animal Nutrition is a leading supplier of innovative dairy feed ingredients that impact each phase of a cow's life cycle. The products in our Portfolio for Profitability™ have been specially formulated to give you more profit per cow. Trust Arm & Hammer Animal Nutrition for innovative, proven, and trusted nutritional solutions.

Balchem**PO Box 600****New Hampton, NY 10958****Phone: 845-326-5711; Fax: 845-326-5742****www.balchem.com****Booth(s): 305, 404**

Founded in 1967, Balchem Corporation and the Animal Nutrition & Health division provides 'protection nutrition' products to the dairy industry including encapsulated choline (Reashure®), niacin (Niashure®), urea (Nitroshure®), and vitamin C (Vitshure®). With the recent purchase of Chelated Minerals Corporation, the company provides premium quality protected Keylated® trace minerals for dairy use.

Bar Diamond Inc.**PO Box 60****Parma, ID 83660****Phone: 208-722-6761; Fax: 208-722-6686****www.bardiamond.com****Booth(s): 217**

Bar Diamond, Inc. supplies rumen cannulae and accessories to researchers worldwide.

Biomim**1846 Lockhill-Selma****Suite 101****San Antonio, TX 78213****Phone: 210-342-9555; Fax: 210-342-9575****www.biomim.net****Booth(s): 408**

Blackwell Publishing

2121 State Ave.

Ames, IA 50014

Phone: 515-292-0140; Fax: 515-292-3348

www.blackwellprofessional.com

Booth(s): 117

Blackwell Publishing is the world's largest independent and privately owned academic publishing company and a world-leading publisher of books and journals in veterinary medicine (science), food science and technology, and animal science. Blackwell publishes texts that represent the very best in clinical expertise, student learning, and academic research. You may find us at www.BlackwellVet.com and www.blackwellfood.com

CABI Publishing

Nosworthy Way

Wallingford, Oxon OX10 8DE

Phone: 44 1491 829310; Fax: 44 1491 829198

www.cabi.org

Booth(s): 416

CABI is a not-for-profit organization that improves people's lives worldwide by providing information and applying scientific expertise to solve problems in agriculture and the environment. Our activities encompass scientific publishing, research, and communication and link science directly with rural communities. We publish a number of books, journals, and abstracts databases in animal science.

NEW DATA! PRO-LAK IMPROVES FEED EFFICIENCY!



- University Research shows Pro-Lak improves **Feed Efficiency** by an average of **8.05%**.
- **Dr. Mike Hutjens**, University of Illinois states "A move from 1.5 to 1.6 (0.1change in FE) equals \$.20 / cow / day"
- What would **8.05%** improvement in **Feed Efficiency** save you in feed costs?

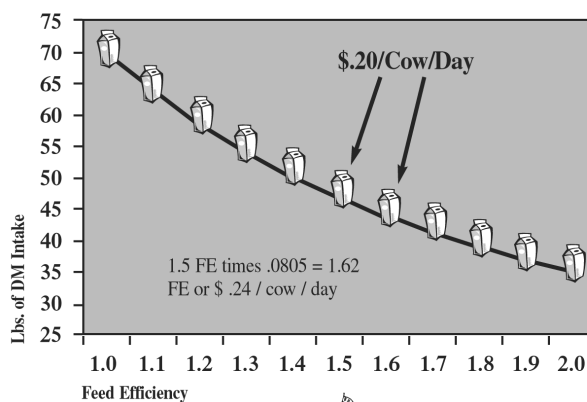
*Call your feed supplier, nutritionist
or H.J. Baker today!*

For more information:

H.J. Baker & Bro., Inc • 228 Sugatuck Avenue, Westport, CT 06880 USA

Phone (203) 682-9200, Telex ITT 42-0944, Fax (203) 227-8351

Email: salesinfo@bakerbro.com • Website: <http://www.bakerbro.com>



H.J. BAKER & BRO., INC.

Quality Products Since 1850

Our Difference is Dependability

Classic Ultrasound Equipment**19900 Mona Rd. #105****Tequesta, FL 33469****Phone: 800-722-6838; Fax: 561-746-4212****www.classicmedical.com****Booth(s): 308**

The veterinary ultrasound specialists since 1985, Classic Medical Supply now offers the powerful **Telavet 1000 Digital Notebook PC ultrasound system** with 17cm Animal Science probe. Now going digital ultrasound for high quality and ease of use is simple. Contact us at (800) 722-6838 or visit www.classicmedical.com for latest information.

Cotton Incorporated**6399 Weston Parkway****Cary, NC 27513****Phone: 919-678-2220; Fax: 919-678-2230****www.cottoninc.com****twedegaertner@cottoninc.com****Booth(s): 319**

Cottonseed is an excellent feed ingredient for cattle, especially lactating cows. It has a high level of energy (fat), protein, and effective fiber. Cottonseed usually increases milk production and butterfat when added to the ration. EasiFlo™ cottonseed is fuzzy cottonseed that has been coated with starch to improve handling characteristics.

Council for Agricultural Science and Technology**4420 W. Lincoln Way****Ames, IA 50014****Phone: 515-292-2125 ext 26; Fax: 515-292-4512****www.cast-science.org****Booth(s): 716**

The Council for Agricultural Science and Technology, CAST is a nonprofit organization composed of 37 scientific societies and many individual, student, company, nonprofit, and associate society members. CAST's Board of Directors is composed of 38 representatives of the scientific societies and individual members representing over 170,000 member scientists, and an 8-member Executive Committee. CAST was established in 1972. The primary work of CAST is the publication of task force reports, commentary papers and issue papers, written by scientists from many disciplines. These publications and their distribution are fundamental activities that accomplish our mission to assemble, interpret, and communicate credible science-based information regionally, nationally, and internationally to legislators, regulators, policymakers, the media, the private sector, and the public.

Cumberland Valley Analytical Services, Inc.**PO Box 669****Maugansville, MD 21767****Phone: 301-790-1980; Fax: 301-790-1981****www.foragelab.com****Booth(s): 310**

Cumberland Valley Analytical Services, Inc. is a full-service forage testing laboratory that serves clients nationally and internationally. We are one of the largest providers of chemistry services including invitro fiber digestibility, in-situ evaluations, and forage fermentation analysis. We routinely perform work on research samples for universities and private companies, including plot evaluation work for hybrid evaluation.

VTEC-Screen

A simple, rapid and highly accurate shiga toxin detection assay

Dr. Lothar Beutin (Robert Koch Institute, Germany)

"The VTEC-Screen is a very useful and competitive test compared to PCR and the verocell assay and was able to detect VTEC belonging to large number of different O groups."

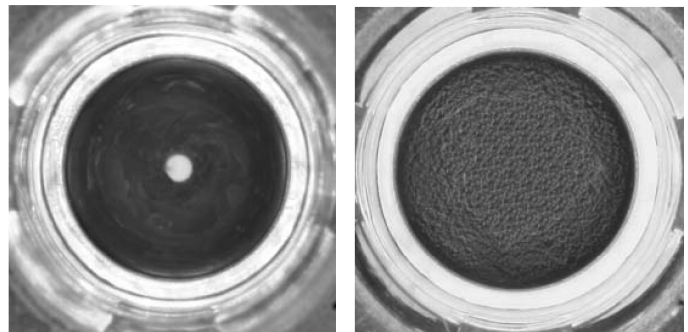
Dr. Henrik Chart (Central Public Health Laboratory System, UK)

"VTEC-Screen proved to be a very simple, convenient and accurate method of detecting VTs in bacterial culture supernatants and patients' faeces."

Dr. Hussein Hussein, University of Nevada, Reno

"The VTEC-Screen replaced our cell culture system for screening bovine stools in our epidemiological studies of non-O157 VTEC and saved us considerable time, effort and cost. In fact, without this test, we would not have been able to do the extensive studies that we did."

The figures at right show a negative and a positive reaction, respectively. Latex particles are coated with anti-shiga-toxin antibodies and if shiga toxins are present in the sample, agglutination occurs such that the latex particles agglutinate and settle to the bottom of the microtiter well to form a visible precipitate. If negative, the latex particles simply settle into a single button-like mass.



Dairy Records Management Systems**316 Chapanoke Rd.****Suite 100****Raleigh, NC 27603****Phone: 919-661-3108; Fax: 919-661-3145****www.drms.org****Booth(s): 101**

DRMS processes DHI data for 14,500 herds with 1.8 million cows each month. Our comprehensive PCDART© program with PocketDairy® for handheld units (which accepts scanned RFID input) will be demonstrated with the newest features. See why PCDART continues to be the most used herd management software in the US.

Dairyland Laboratories, Inc.**217 E. Main St.****Arcadia, WI 54612****Phone: 608-323-2123; Fax: 608-323-2184****www.dairylandlabs.com****Booth(s): 202**

Dairyland Laboratories, Inc. is a completely independent agriculture-testing laboratory providing extensive analysis of feed, forage, soil, water, and manure. We provide a complete range of services including molds, mycotoxins, in vitro digestibilities (NDF and starch), NIR calibration, development & licensing.

Dalex Computer Systems**240 Industrial Blvd****Waronia, MN 55387****Phone: 800-421-3834; Fax: 800-442-2543****www.dalex.com****Booth(s): 203**

Consulting Nutritionist is a flexible ration-balancing program designed for dairy, beef, swine, and horse species. This program provides ration-balancing and ration modeling using up-to-date scientific data including NRC Dairy 2001, CNCPS Model, NRC Swine 1998 and NRC Beef 1996. Come see our newest release in booth 203. Call 1-800-421-3834.

Degussa Corporation**1701 Barrett Lakes Blvd.****Suite 340****Kennesaw, GA 30144****Phone: 678-797-4300; Fax: 678-797-4313****www.aminoacidsandmore.com****Booth(s): 705****Diamond V Mills****838 1st St. NW****Cedar Rapids, IA 52402****Phone: 319-866-7641; Fax: 319-366-6333****www.diamondv.com****Booth(s): 515, 517, 519**

Diamond V is the world's leading manufacturer of fermented yeast culture products. For over 60 years we've provided customers with YC, XP, XPC Concentrate, and XP DFM, a direct-fed microbial blend for ruminants. SelenoSource AF is our premier organic selenium yeast. We now introduce DV Aqua, our premier yeast culture designed & manufactured specifically for aquaculture.

Distillers Grains Technology Council**435 Lutz Hall****Univ. of Louisville****Louisville, KY 40292****Phone: 800-759-3448; Fax: 502-852-1577****www.distillersgrains.org****Booth(s): 410**

Distillers grains is a rapidly expanding animal feed ingredient from the ethanol fuel and beverage distillers with over 9 million tons being produced in the United States. University and on farm feeding studies have proven its excellent nutritive value and potential to reduce ration costs. Ask us for sources and applications using it wet or dry.

DSM Nutritional Products**45 Waterview Blvd.****Parsippany, NJ 07054****Phone: 971-257-8179; Fax: 971-257-8653****www.nutraaccess.com****Booth(s): 119**

DSM Nutritional Products is the global leader in micro-ingredients solutions. DSM Nutritional Products is proud to offer the most comprehensive line of vitamins available in the market place, along with enzymes and direct-fed microbials. With their network of 34 premix plants globally, DSM Nutritional Products can deliver customized nutrition solutions, anywhere in the world.

Elanco Animal Health**2001 West Main St.****PO Box 708****Greenfield, IN 46140****Phone: 317-276-4124; Fax: 317-276-4471****www.elanco.com****Booth(s): 708****Elsevier****1600 John F. Kennedy Blvd.****Suite 1800****Philadelphia, PA 19103****Phone: 215-234-3491; Fax: 215-234-3494****www.elsevierhealth.com****Booth(s): 400**

Elsevier is the leading publisher in veterinary medicine and animal science, and publishes journals such as *Livestock Science*, *Applied Animal Behaviour Science*, and *Animal Feed Science and Technology*. Visit our stand for sample copies and more information on these and our other journals!

FDA-CVM**7519 Standish Place****Suite 3508****Rockville, MD 20855****Phone: 240-276-9301; Fax: 240-276-9115****www.fda.gov/cvm****Booth(s): 215**

The Center for Veterinary Medicine (CVM) regulates the manufacture and distribution of food additives and drugs for animals, including food animals and companion animals. CVM regulates drugs, devices, and food additives used in over one hundred million companion animals, plus millions of poultry, cattle, swine, and other species.

Feed Management Systems, Inc.**720 E. Blue Earth Avenue****Fairmont, MN 56031****Phone: 763-560-8138 x 188; Fax: 507-238-3350****www.feedsys.com****Booth(s): 600**

Feed Management Systems, Inc. (FMS) is an award-winning software solutions company linking critical information between feed manufacturers, their suppliers, and customers. FMS helps ensure the safety, quality, and affordability of the global feed supply, providing solutions to automate and optimize formulation, pricing, ordering, labeling, delivery, risk management, & regulatory compliance.

FeedAC**1111 N. Dunlap****Savoy, IL 61874****Phone: 217-356-3182; Fax: 217-398-4119****www.feedac.org****Booth(s): 710**

The Feed Analysis Consortium, Inc. (FeedAC) is a membership-based nonprofit organization dedicated to the advancement of feed analysis and nutritional modeling. The mission of FeedAC is to serve the animal feed industry by building and maintaining a Feed Information System for all farm animals, developing improved methods of feed analysis, and encouraging the development of improved diet formulation and evaluation models. FeedAC replaces the previously established Ruminant Feed Analysis Consortium (RFAC). Please visit www.feedac.org for membership information.

FEEDSTUFFS**12400 Whitewater Drive****#160****Minnetonka, MN 55343****Phone: 952-930-4349; Fax: 952-938-1832****www.feedstuffs.com****Booth(s): 402**

FEEDSTUFFS is the only weekly, paid news source for agribusiness. Each week, we keep our subscribers informed on the important issues affecting the business of producing food for the world. It is the only place to get the weekly news about business mergers & acquisitions, retail & consumer trends, poultry & livestock market supply & demand, regulatory & political affairs, production animal & pet health & nutrition, global developments, crop & grain markets, commodity price updates, and new products & concepts.

GrowSafe Systems**280105 Range Rd. 22****RR1 Site 1 Box 19****Airdrie, AB T4B2A3****Phone: 403-912-1879; Fax: 403-398-1327****www.growsafe.com****Booth(s): 505**

GrowSafe Systems Ltd. (GrowSafe) develops innovative RFID solutions for the agricultural research, fed cattle, and dairy industries. We are both a systems integrator and an OEM with extensive engineering capability. A GrowSafe RFID system individually identifies animals with attached or implanted electronic identification tags. GrowSafe antennas and external sensors acquire information about an individual animal's intake, behavior, health, and performance without direct contact or line of sight.

GTC Nutrition**600 Corporate Circle****Suite H****Golden, CO 80401****Phone: 303-216-2489; Fax: 303-216-2477****www.fortifeed.com****Booth(s): 303**

GTC Nutrition is a leading provider of customized nutrition solutions, and science-based ingredients that promote health for all animals and humans. The company's areas of expertise include scientific and technical counsel, marketing and brand development, applications innovation, logistics and regulatory support, and customer service. For more information, please visit www.fortifeed.com.

H.J. Baker & Bro., Inc.**228 Saugatuck Ave.****Westport, CT 06880****Phone: 203-682-9200; Fax: 203-227-8351****www.bakerbro.com****Booth(s): 804**

H.J. Baker & Bro, Inc. brings the experience and resources of over 50 years of manufacturing marine and animal protein supplements and 150 years in the feed, food and fertilizer business. In the late 1980s H.J. Baker assembled a team of the best university minds in the field of dairy protein nutrition to develop and research PRO LAK for the dairy industry. Specifically formulated for today's high producing dairy cow, PRO LAK is a multisource marine and animal by-pass protein designed to compliment the protein from rumen microbial activity. The desired nutrient balance is accomplished by 72% of the protein by passing rumen degradation and delivering the essential amino acid profile to support maximum milk production. University research has been conducted looking at milk production, digestibility, and feed efficiency of PRO LAK. All of our research can be found at our website: www.bakerbro.com

Hoard's Dairyman**PO box 801, 28 Milwaukee Ave. W****Fort Atkinson, WI 53538-0801****Phone: 920-563-5551; Fax: 920-563-7298****www.hoards.com****Booth(s): 311**

Ice Robotics Limited
Logan Bldg. Roslin Biocentre
Roslin, Scotland
Phone: (44131) 527-4380; Fax: (44131) 527-4381
www.icerobotics.co.uk
Booth(s): 509, 608

IceRobotics develops and manufactures advanced sensor systems and automation technologies for use in livestock management and research. This includes IceTag for animal activity monitoring, IceScore for body condition scoring, and IceSampler for automatic blood sampling. Further information can be found at www.icerobotics.com

International Ingredient Corporation
4240 Utah St.
Box 22106
St. Louis, MO 63116
Phone: 314-776-2700; Fax: 314-776-3395
www.iicag.com
Booth(s): 700

International Ingredient Corporation is a manufacturer of high-quality specialty ingredients for the animal feed and petfood industries. IIC has nine plant locations supplying ingredients for swine, pets, dairy cattle, aquaculture, and poultry. Key IIC products include: Dairylac® 80, Granular Whey, Brewtech® Brewers Yeast, Cheese Plus, Milk Chocolate Product, Nutri-Sure™, Brown Sugar Food, and other specialty ingredients.

Iowa Soybean Association
4554 144th St.
Urbandale, IA 50322
Phone: 515-251-8640; Fax: 515-251-8657
www.iasoybeans.com
Booth(s): 604

Midland BioProducts Corporation
800 Snedden Drive
PO Box 309
Boone, IA 50036
Phone: 800-370-6367; Fax: 515-432-7790
www.midlandbio.com
Booth(s): 513

Midland Quick Test Kits (a lateral flow device) measure passive immunity issues in newborn calves and foals. Testing either the calf or foal's whole blood, dam's colostrum, or mare's colostrum for IgG. Antibodies, controls, buffers, and US standards for quantitatively measuring equine, bovine, and porcine IgG are available.

MS Specialty Nutrition/ MSB
Illinois & Water St.
Dundee, IL 60118
Phone: 847-426-3411 x 1125; Fax: 847-426-4121
www.msspecialtynutrition.com
Booth(s): 605, 704

MS Specialty Nutrition/MSB is a leading, research-driven supplier of nutrition and health products designed to optimize animal performance. For over 55 years, MS Specialty Nutrition has been dedicated to research, develop, manufacture and market high-quality products and services to its customers.

National Institute for Animal Agriculture
1910 Lyda Ave.
Bowling Green, KY 42104
Phone: 270-782-9798; Fax: 270-782-0188
www.animalagriculture.org
Booth(s): 508

The National Institute for Animal Agriculture (NIAA) is a forum for building consensus and advancing solutions for animal agriculture and to provide continuing education and communications linkages to animal agriculture professionals. Our mission truly reflects NIAA—where it has been, where it is, and where it is going. NIAA is the only forum where producers/owners (cattle, equine, poultry, small ruminants, and swine), scientists (corporate, academia, and government), veterinarians (private practice, industrial, and government), regulators (state and federal), and business executives (corporate and association) meet in a common effort to deal with shared issues and opportunities. Visit our web site www.animalagriculture.org.

Nouriche Nutrition, Ltd.
21 Normandy Drive
Lake St. Louis, MO 63367
www.nouriche.com
Booth(s): 702

Nouriche Nutrition, always on the leading edge of new technology, is the foremost leading innovator and supplier of high-performance, most-cost-effective *Solutions* dispersible premixes, supplements, and electrolytes for calves, horses and pigs, Nutrior soluble wheat gluten protein, *Emcelle*—the most bio-available vitamin E for calves, *Baby Doll* dairy beef feeds and introducing the *Jubilee* computerized, self-cleaning freedom feeding equipment.

Novus International, Inc.
530 Maryville Centre Drive
St. Louis, MO 63141
Phone: 314-576-8441; Fax: 314-576-4635
www.novusint.com
Booth(s): 611, 613

Novus International, Inc. is a global leader in the animal feed and health industries, with an ever-expanding portfolio of nutrition and health solutions. The Novus product line includes amino acids, minerals, organic acids, feed quality, and specialty, with brand names such as ALIMET®, MFP™, MINT-REX®, ACTIVATE®, and SANTOQUIN®.

Omega Protein, Inc.
2101 CityWest Blvd.
Bldg. 3, Suite 500
Houston, TX 77042
Phone: 713-940-6169; Fax: 713-940-6166
www.omegaproteininc.com
Booth(s): 200

Omega Protein is the world's largest manufacturer of heart-healthy fish oils containing omega-3 fatty acids, as well as protein rich specialty fish meals and fish solubles used as value-added ingredients in aquaculture, pet, equine, poultry, swine and other livestock feeds. Our products are available in bulk, bag, or drums.

Partners Advantage Representing: Agrilliance,
Land O' Lakes Purina Feed & Croplan Genetics
PO Box 64089 - MS 348
St. Paul, MN 55164
Phone: 651-451-5304; Fax: 651-451-4561
www.landolakesinc.com or
www.partnersadvantage.net
Booth(s): 302

Welcome to the Land Of Opportunity! Land O'Lakes Purina Feed has many opportunities with positions in both sales and mid-management. We also have trainee and college internship opportunities available. Land O'Lakes Purina Feed is the leading feed company in North America. We are seeking candidates with strong nutrition, management or sales backgrounds for positions across the United States. There are currently many great opportunities available. Land O'Lakes, Inc. is an Equal Opportunity and Affirmative Action Employer. Land O'Lakes, Inc. enforces a policy of maintaining a drug free workforce, including pre-employment substance abuse testing.

PetAg Inc.
255 Keyes Ave
Hampshire, IL 60140
Phone: 847-683-2288; Fax: 847-683-2343
www.petag.com
Booth(s): 301

Vast array of pet products, including market-leading milk replacers Esbilac® and KMR®, Rawhide Brand®, USA Beefhide chews Made in the U.S.A., Chunky Chew™, award winning Pink Parrot® avian toys and treats, Doggy Giggles™ dog toys and many other PetAg® nutritional products including EnerGel™, Mirra-Coat® skin & coat supplements for canine, feline and equine. Foal-Lac® equine milk replacer, Formula V® veterinary products and Zoologic Milk Matrix system for exotic animals.

Poultry Protein & Fat Council

1530 Cooledge Rd.

Tucker, GA 30084

Phone: 770-493-9401; Fax: 770-493-9257

www.poultryegg.org

Booth(s): 309

The Poultry Protein & Fat Council is a consortium of 13 member companies that produce high-quality poultry meal, feather meal, and poultry fat. Request our free video and/or CD at www.poultryegg.org.

Prentice Hall

1 Lake St.

Upper Saddle River, NJ 07458

Phone: 201-236-5882; Fax: 201-236-5888

www.prenhall.com

Booth(s): 213

Prentice Hall is proud to be the leading provider of high quality educational materials for your agriculture courses. We invite you stop over to our booth or visit our websites at www.prenhall.com or www.prenhall.com/agribooks to see the selection of titles we have available and what we've got planned.

Prince Agri-Products, Inc.

PO Box 1009

Quincy, IL 62306

Phone: 217-222-8854; Fax: 217-222-5098

www.princeagri.com

prince@princeagri.com

Booth(s): 405, 504

Prince Agri Products, Inc. takes pride in *Advancing Nutrition for Healthy Animals™* by knowing how and why its products work. Prince is your source of quality trace minerals, trace mineral premixes, and branded ingredients. The Prince product line includes: CHROMAX® brand chromium tripicolinate, the leading chromium supplement; Lesaffre yeast products; Desert King natural yucca and quillaja products; Animate, the anionic salt that cows will eat; Omni-Gen-AF® supplement for all stages of cattle; and Rumatel®, the in-feed dewormer for cattle and goats.

Find out your calf's IgG status before it's too late!

**Colostrum
Bovine IgG**

**Whole Blood
Calf IgG**

Midland QuickTest Kits®

SAVES TIME

No More waiting for colostrum to reach room temperature before testing

SIMPLE PROCEDURE

No More clotting and centrifuging the calf's blood

QUALITATIVE ANSWER

No More guessing at turbidity results or colostrum color and weight

PREVENTS CARRYOVER

No More cleaning the refractometer or Colostrometer™

TIMELY

No More waiting for RID gel plate results

LABOR-SAVING

No More time-consuming procedures

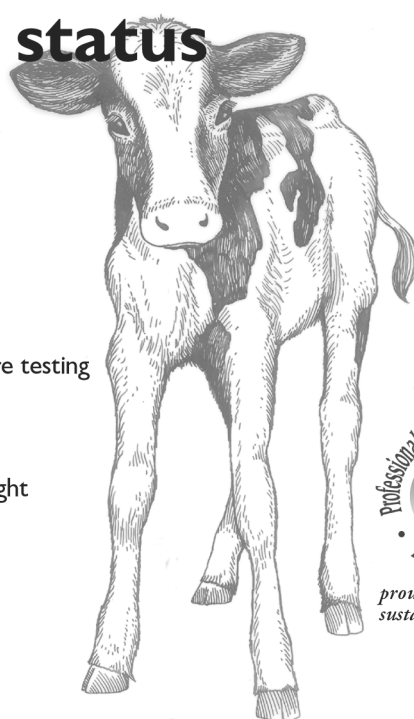


**MBC MIDLAND BIOPRODUCTS
CORPORATION®**

**US and Canada Toll Free
800.370.6367**

**Tel 515.432.7799
Fax 515.432.7790**

**sales@midlandbio.com
www.midlandbio.com**



*proud to be a
sustaining member*

Copyright © Midland BioProducts Corporation © 2006 All rights reserved.

Probiotech International, Inc.**6225 Choquette St.****St. Hyacinthe, QC J25 8L2****Phone: 450-771-7252; Fax: 450-771-4509****www.probiotech.com****Booth(s): 219**

Probiotech International, Inc. develops and provides the animal nutrition industry with natural solutions. The line of products was designed using the principles of biotechnology in order to promote animal health and to maximize agriculture production with the respect of our environment in mind. Products range from patented rumen-protected choline for dairy to organic acidifiers for swine and poultry.

Quality Management, Inc.**426 Hayward Ave. North****Oakdale, MN 55128****Phone: 651-501-2337; Fax: 651-501-5797****www.qmisystems.com****Booth(s): 412****Saf Agri/Lesaffre Feed Additives****433 East Michigan St.****Milwaukee, WI 53202****Phone: 414-615-4046; Fax: 414-615-4003****www.saf-agri.com****Booth(s): 312**

Saf Agri/Lesaffre Feed Additives, a member of the Lesaffre Group of companies, markets Lesaffre's agricultural products throughout North and South America. These products include Procreatin-7® active dry yeast, BIOSAF® heat resistant active yeast for pelleted feeds, LFA Selenium Yeast, SAFIZYM® enzymes (xylanase, beta-glucanase, and cellulase), and Safmannan®, a yeast-derived source of mannan oligosaccharides. The Lesaffre Group is the world's largest yeast manufacturer and recently opened a new production facility, Red Star Yeast Company LLC, in Cedar Rapids, Iowa.

Soybest**PO Box 157****West Point, NE 68788****Phone: 402-372-2429; Fax: 402-372-3305****www.soybest.com****Booth(s): 201, 300****Trouw Nutrition USA****115 Executive Dr.****Highland, IL 62249****Phone: 618-654-2070; Fax: 618-654-6700****www.trouw-nutritionusa.com****Booth(s): 218**

Trouw Nutrition USA offers Greenline™ Technologies that provide nutrition solutions, specialty products and premixes for the livestock, poultry and petfood industry, ie. OPTiMIN® chelated minerals, PROTIMAX® Specialized Egg Globulins, Progenos™ 28 - supplement to increase litter size, CowDrink™ - fresh cow supplement, Milkivit® milk replacers, Novasil™ - calcium sodium aluminosilicate, and TNI-betain. Innovation - That's how. That's Trouw.

USDA - Animal Welfare Information Center**10301 Baltimore Ave., Room 410****Beltsville, MD 20705****Phone: 301-504-5170; Fax: 301-504-5170****www.nal.usda.gov****Booth(s): 211**

The Animal Welfare Information Center, a unit of the United States Department of Agriculture, provides information for the improved care and use of animals used in research, testing, teaching, and exhibition. The staff also assists people and institutions in complying with information requirements of the Federal Animal Welfare Act. Services provided include free publications, workshops, and custom literature searches performed on a cost recovery basis.

Unity Scientific, Inc.**411 E. Main St.****Purcellville, VA 20132****Phone: 540-338-8991; Fax: 540-338-8992****www.unityscientific.com****Booth(s): 603**

Unity Scientific manufactures and sells a complete line of cost-effective, network ready NIR (near-infrared) and NIT analyzers for a wide variety of laboratory at-line and process applications. Unity offers a wide range of applications for the following industries: food, feed, pet food, dairy, tobacco, pharmaceutical, and general industrial markets. Unity also offers a complete line of sample preparation equipment that includes auto distillation, solvent extraction, and block digestion.

Varied Industries Corporation**905 S. Carolina Ave.****Mason City, IA 50401****Phone: 641-423-1460; Fax: 641-423-0832****www.vi-cor.com****Booth(s): 601**

In 1974, a patent was issued to a small company in Mason City, Iowa, for a fermentation product for animal feeds. This process became the foundation technology on which Varied Industries Corporation (Vi-COR) was founded. Vi-COR has expanded to a company with a global focus, manufacturing of world-class fermentation products and providing custom manufacturing services.

Virtus Nutrition**320 Springside Dr. #300****Fairlawn, OH 44333****Phone: 330-665-1999; Fax: 330-665-2195****Booth(s): 216**

Virtus Nutrition is a leading marketer of Ener G II® a rumen inert fat product and the only source of Strata G® with omega-3 fatty acids. As a technology leader, Virtus Nutrition provides performance, consistency, and a rapid response to customer needs, with research proven products vital for the dairy industry's nutritional requirements.

West Central**406 First St.****Ralston, IA 51459****Phone: 712-667-3200; Fax: 712-667-3479****www.west-central.com****Booth(s): 818**

West Central® manufactures innovated feeds for the dairy industry. SoyPLUS® has become the Gold Standard of dairy feed ingredients. It's highly digestible, delivers high quality RUP, and combines outstanding palatability and consistency. SoyChlor® is a palatable chloride supplement for close-up dairy cows.

Western Yeast Company**305 W. Ash St.****Chillicothe, IL 61523****Phone: 817-560-0351; Fax: 817-560-0351****www.westernyeast.com****Booth(s): 414**

Western Yeast Company was founded in 1932 and uses the Newhaven process for making yeast culture. Western Yeast Culture is an active, all-natural feed supplement designed specifically to improve animal nutrition. It consists of live yeast cells, plus the media on which they were grown, carefully dried to maintain the fermentation activity of the cells.

Zinpro**10400 Vicking Dr.****Suite 240****Eden Prairie, MN 55344****Phone: 800-445-6145; Fax: 952-944-2749****www.zinpro.com****Booth(s): 401, 500, 403, 502**

Zinpro Performance Minerals™, the premier source of trace minerals in the industry, deliver consistent, performance-driven results. Performance minerals must meet essential, measurable criteria based on return, response, repeatability, research, and reassurance. Zinpro Performance Minerals are uniquely designed and manufactured to be the highest bioavailable trace mineral products on the market. To learn more, contact your local Zinpro representative.

*Products you **know.***



Procreat7[®]



Animate[®]

BIOSAF[®]

OmniGen-^{AF}
Advanced Formula
NUTRITIONAL SUPPLEMENT

Generate Plus[®]

LFA
LESAFFRE
FEED ADDITIVES
LFA Selenium Yeast 2000

*Nutrition you can **trust.***



PRINCE AGRI PRODUCTS, INC.

Advancing Nutrition for Healthy Animals[™]

P.O. Box 1009 • Quincy, IL 62306 • prince@princeagri.com • www.princeagri.com

MS060506

2006 ADSA - ASAS

Corporate Sustaining Members

(As of June 1, 2006)

ADSA

Akey
Alltech Biotechnology Center
Adisseo
BioZyme Incorporated
Cargill Animal Nutrition
Church & Dwight Company
Custom Dairy Performance, Inc.
Danisco USA Inc.
Diamond V Mills Inc.
DSM Food Specialties
Elanco Animal Health Eli Lilly and Company
Kent Feeds, Inc.
Kerry Bio-Science
Kraft Foods
Land O'Lakes, Inc.
Land O' Lakes, Purina Feed LLC
MIN-AD, Inc.
Monsanto Corporation
Mosaic
Novus International
Pfizer Animal Health
Pioneer, A DuPont Company
Prince Agri-Products, Inc.
Varied Industries Corporation
West Central
Westfalia Surge Inc.
Zook Nutrition & Management, Inc.

ASAS

Ajinomoto Heartland, LLC
Akey
Archer Daniels Midland Co.
Babcock Genetics, Inc.
Diamond V Mills, Inc.
Elanco Animal Health
Fats & Proteins Research Foundation, Inc.
Global Pig Farms, Inc.
International Ingredient Corporation
Kent Feeds, Inc.
Land O'Lakes, Purina Feed, LLC
MIN-AD, Inc.
Monsanto Company
Mosaic
National By-Products, LLC
National Pork Board
Nutra-Flo Biotechnologies
PCS Sales
Pfizer Animal Health
PIC
Pioneer, A DuPont Company
Prince Agri-Products, Inc.
Ralco Nutrition, Inc.
Zinpro

Thank you for your support!

Schedule of Events

Friday, July 7

06:00 pm - 08:00 pm	ADSA Executive Committee	Hilton Minneapolis, Board Room 3
07:00 pm - 09:30 pm	ASAS New Board Orientation	Hyatt Regency, Lake Nokomis
07:00 pm - 09:00 pm	ASAS Membership Committee Meeting	Hyatt Regency, Lake Minnetonka

Saturday, July 8

07:00 am - 05:00 pm	PAACO Board Meeting	Hyatt Regency, Lake Nokomis
07:30 am - 05:00 pm	ADSA Board of Directors Meeting	Hilton Minneapolis, Duluth Room
08:00 am - 05:00 pm	ASAS Board of Directors Meeting	Hyatt Regency, Lake Superior A
12:00 pm - 05:00 pm	Registration Open (Pre-registered, badge & material pick up only)	Convention Center, Mezzanine Level
12:00 pm - 05:00 pm	SAD Tour: Transition Mgmt Facility - Emerald, WI	Meet in the Doubletree Lobby
06:00 pm	SAD Informal Event - Mall of America	Meet in the Doubletree Lobby
07:30 pm - 09:00 pm	ARPAS Executive Committee Meeting	Hyatt Regency, Lake Nokomis

Sunday, July 9

07:00 am - 07:00 pm	Registration Open	Convention Center, Mezzanine Level
07:30 am - 10:00 am	ADSA New Board Orientation	Hilton Minneapolis, Board Room 1
08:00 am - 12:00 pm	ASAS Board of Directors Meeting	Hyatt Regency, Lake Superior A
08:00 am - 05:00 pm	Exhibit Set Up	Convention Center, Exhibit Hall A
08:00 am - 05:00 pm	Student Dairy Clubs Set Up Exhibits	Convention Center, Exhibit Hall A
08:00 am - 05:00 pm	ARPAS Governing Board Meeting	Hyatt Regency, Lake Nokomis
08:00 am - 05:00 pm	Hospitality Lounge	Convention Center, M101A
11:00 am - 12:00 pm	SAD Officers and Advisor Meeting	Convention Center, 200J
12:00 pm - 01:00 pm	ADSA-SAD Midday Mixer & Pizza Party	Convention Center, Seasons
12:00 pm - 01:00 pm	ADSA JDS Editors and Journal Management Committee Luncheon	
01:00 pm - 03:00 pm	ASAS Foundation Board of Trustees Meeting	Hilton Minneapolis, Board Room 2
01:00 pm - 05:00 pm	ADSA Journal Management Committee Meeting	Hyatt Regency, Lake Minnetonka
01:00 pm - 05:00 pm	ADSA-SAD Quiz Bowl Seating/Preliminary Rounds	Hilton Minneapolis, Board Room 2
02:00 pm - 03:00 pm	ADSA Production Division Council Meeting	Convention Center, 200HI
02:00 pm - 03:30 pm	ADSA Foundation Board of Trustees Meeting	Convention Center, M100 BC
03:00 pm - 04:00 pm	ADSA Production Division Nominating Committee	Hilton Minneapolis, Board Room 1
03:00 pm - 04:00 pm	ADSA Production Division Resolutions Committee	Convention Center, M100 DE
03:00 pm - 05:00 pm	2006 ADSA-ASAS & 2007 ADSA-ASAS-PSA-AMPA Program Chairs & Vice Chairs Meeting	Convention Center, M100 BC
05:00 pm - 06:00 pm	ADSA Dairy Foods Division Council Meeting	Convention Center, M100 GH
05:00 pm - 05:30 pm	ADSA-SAD Quiz Bowl Final Round	Convention Center, M100 DE
05:30 pm	SAD Picnic at Lake Harriet	Convention Center, 200 I
07:00 pm - 08:30 pm	2006 ADSA-ASAS Opening Session	Pavilion near Band Shell
08:30 pm - 10:00 pm	2006 ADSA-ASAS Opening Reception	Convention Center, Auditorium
		Convention Center, Ballroom A

Monday, July 10

06:30 am - 08:00 am	ADSA Production Division Extension Breakfast	Hilton Minneapolis, Salon B
06:30 am - 08:00 am	ADSA Journal Editorial Board Breakfast/Meeting	Hilton Minneapolis, Duluth Room
06:30 am - 04:00 pm	Registration Open	Convention Center, Mezzanine Level
07:00 am - 08:15 am	ADSA-SAD Exhibit Set up	Convention Center, Exhibit Hall A
07:30 am - 09:30 am	Poster Presentations	Convention Center, Exhibit Hall A
07:30 am - 05:00 pm	Commercial Exhibits & ADSA-SAD Exhibits Open	Convention Center, Exhibit Hall A
07:30 am - 05:00 pm	Job Resource Center	Convention Center, Exhibit Hall A

08:00 am - 05:00 pm	Hospitality Lounge	Convention Center, M101 A
08:30 am - 09:15 am	ADSA-SAD Business Meeting	Convention Center, 200 H
09:30 am - 10:30 am	ADSA-SAD Judging of Yearbooks, Scrapbooks, Annual Reports	Convention Center, 200 I
09:30 am - 10:30 am	ADSA-SAD Interviews for Outstanding Student and Advisor Awards	Convention Center, 200 J
09:30 am - 10:30 am	ADSA-SAD Activities Symposium	Convention Center, 200 H
09:30 am - 05:00 pm	Scientific Sessions	Convention Center
10:30 am - 12:30 pm	ARPAS Exam	Convention Center, 201 A
11:00 am - 04:15 pm	ADSA-SAD Undergraduate Paper Presentations	Convention Center, 200 H
12:00 pm - 02:00 pm	ASAS Past Presidents' Luncheon	Hyatt Regency, Lake Calhoun
12:30 pm - 02:00 pm	ADSA Past Presidents' Luncheon	Hilton Minneapolis, Rochester Room
12:30 pm - 02:00 pm	ACAN Annual Meeting	Convention Center, 201 A
12:30 pm - 02:00 pm	Women & Minority Issues in Animal Agriculture Luncheon & Lecture	Convention Center, 200 A
12:30 pm - 02:30 pm	ASAS Publications Committee Luncheon	Hyatt Regency, Cedar Lake
02:00 pm - 04:00 pm	ARPAS Exam	Convention Center, 201 A
02:00 pm - 03:30 pm	DISCOVER Steering Committee Meeting	Convention Center, 201 B
04:00 pm - 05:00 pm	Centennial Poster Reception	Exhibit Hall A
05:00 pm - 07:00 pm	Informal Calf Gathering	Hilton Minneapolis, Salon B
05:00 pm - 06:00 pm	ADSA Town Hall Meeting	Convention Center, 101 HI
05:30 pm - 07:00 pm	ASAS Award Winners Reception and Photo Session	Hyatt Regency, Nicollet D1, D2, D3
07:00 pm - 08:30 pm	ASAS Awards Program	Hyatt Regency, Nicollet Ballroom
07:00 pm	Retirement Reception for Ken Cummings & Bill Chalupa	Hilton Minneapolis, Duluth Room
08:30 pm - 11:00 pm	Iowa State Social	Hyatt Regency, Greenway A-C
08:30 pm - 12:30 am	Dance Party with Johnny Holm Band	Hilton Minneapolis, Salons DEFG

Tuesday, July 11

06:15 am	Fun Run at Loring Park	Meet in Hyatt Regency Lobby
06:30 am - 08:00 am	ADSA Dairy Foods Division Extension Breakfast	Hilton Minneapolis, Ramsey Room
06:30 am - 08:00 am	PSU Breakfast	Hyatt Regency, Greenway FG
06:30 am - 08:00 am	University of Illinois Breakfast	Hyatt Regency, Greenway HJ
06:30 am - 08:00 am	Virginia Tech Breakfast	Hilton Minneapolis, Rochester Room
07:00 am - 08:00 am	Kentucky Breakfast	Hyatt Regency, Skyway Suite AB
07:00 am - 08:00 am	ADSA Foundation Estate Planning Breakfast	Hilton Minneapolis, Directors Row 1
07:00 am - 03:30 pm	Registration Open	Convention Center, Mezzanine Level
07:30 am - 09:30 am	Poster Presentations	Convention Center, Exhibit Hall A
07:30 am - 05:00 pm	Commercial Exhibits & ADSA-SAD Exhibits Open	Convention Center, Exhibit Hall A
07:30 am - 05:00 pm	Job Resource Center	Convention Center, Exhibit Hall A
08:00 am - 05:00 pm	Hospitality Lounge	Convention Center, M101 A
08:30 am - 09:30 am	ADSA-SAD Business Meeting - Election of Officers	Convention Center, 200 H
09:30 am - 05:00 pm	Scientific Sessions	Convention Center
09:30 am - 10:15 am	ADSA-SAD Student Career Symposium: Making the Most of a Job Fair	Convention Center, 200 H
10:30 am - 11:30 am	ADSA-SAD Job Fair	Convention Center, Exhibit Hall
11:30 am - 12:30 pm	ADSA Production Division Business Meeting	Convention Center, 200 A
11:30 am - 12:30 pm	ADSA Dairy Foods Division Business Meeting	Convention Center, 200 DE
11:45 am - 02:00 pm	ADSA-SAD Awards Luncheon	Convention Center, Seasons Room
12:30 pm - 02:00 pm	NE ASAS/ADSA Business Meeting & Awards Luncheon	Convention Center, 200 J
12:30 pm - 02:00 pm	ADSA DF Division Milk Proteins & Enzyme Committee	Hilton Minneapolis, Board Room 2
12:30 pm - 02:00 pm	ARPAS Business Meeting	Convention Center, 101 J
12:30 pm - 02:00 pm	ADSA Dairy Foods Division Program Planning Lunch	Hilton Minneapolis, Board Room 1
12:30 pm - 02:00 pm	ASAS Division/Associate Editors Luncheon	Hyatt Regency, Lake Calhoun
02:00 pm - 04:00 pm	ARPAS Exam	Convention Center, 201 A

02:00 pm - 03:30 pm	2006 Spouses' Event	Brit's Pub
02:00 pm - 05:30 pm	Southern Branch ADSA Symposium & Business Meeting	Convention Center, 101 BC Convention Center, 200 I
02:00 pm - 03:00 pm	ADSA-SAD Award & Club Photos	
02:30 pm - 03:30 pm	ADSA-SAD Committee Meeting - Old and New Officers & Advisors	Convention Center, 200 H
03:30 pm - 05:30 pm	ASAS JAS Forum (Division/Associate Editors and Authors)	Convention Center, M100 A Convention Center, 200 J Hilton Minneapolis, Duluth Room Hilton Minneapolis, Salons EFG
05:00 pm - 06:00 pm	Block & Bridle Club Advisors Meeting	
05:00 pm - 06:30 pm	ADSA Award Donor Dinner	
07:00 pm - 08:00 pm	ADSA Awards Program	
08:00 pm	MSU Department of Animal Science 100th Anniversary	Hilton Minneapolis, Duluth Room Hilton Minneapolis, Salon D Hilton Minneapolis, Salons EFG
08:15 pm - 09:30 pm	2006 ADSA-ASAS Ice Cream Social	
08:15 pm - 09:30 pm	ADSA Foundation Auction & Raffle	

Wednesday, July 12

06:30 am - 08:00 am	Purdue University Breakfast	Hyatt Regency, Mirage Room
07:00 am - 03:00 pm	Registration Open	Convention Center, Mezzanine Level
07:30 am - 09:30 am	Poster Presentations	Convention Center, Exhibit Hall A
07:30 am - 05:00 pm	Job Resource Center	Convention Center, Exhibit Hall A
07:30 am - 05:00 pm	Commercial Exhibits Open	Convention Center, Exhibit Hall A
08:00 am - 05:00 pm	Hospitality Lounge	Convention Center, M101 A
09:30 am - 10:00 am	Joint ADSA-ASAS Business Meeting	Convention Center, 101 BC
10:00 am - 10:30 am	ADSA Business Meeting	Convention Center, 101A
10:00 am - 10:30 am	ASAS Business Meeting	Convention Center, 101 DE
10:30 am - 05:00 pm	Scientific Sessions	Convention Center
12:30 pm - 02:00 pm	ADSA Board of Directors Meeting	Hilton Minneapolis, Rochester Room
12:30 pm - 02:00 pm	Feed Analysis Consortium	Convention Center, M100 DE
12:30 pm - 02:00 pm	ASAS Board of Directors Meeting	Hyatt Regency, Lake Superior A
02:00 pm - 04:00 pm	ARPAS Exam	Convention Center, 201 A
04:30 pm - 06:00 pm	2006 Closing/International Reception	Convention Center, Ballroom B
05:00 pm - 08:00 pm	Commercial Exhibits Dismantle	Convention Center, Exhibit Hall A
05:30 pm	University of Minnesota Farewell Reception	Hilton Minneapolis, Symphony III

Thursday, July 13

07:30 am - 09:30 am	ADSA-ASAS Joint Executive Committee Breakfast	Hyatt Regency, Lake Minnetonka
08:00 am - 10:00 am	Registration Open	Convention Center, Mezzanine Level
08:00 am - 12:00 pm	Scientific Sessions	Convention Center

ADSA Student Affiliate Division Program

SAD Special Events

Saturday, July 8

SAD Tour: The Transition Management Facility in Emerald, WI

12:00 - 5:00 pm

Charter bus departs from DoubleTree Guest Suites

Ticket Price: \$11

The Transition Management Facility (TMF) is a unique education and research facility for training veterinary students, for providing continuing education of veterinarians and education programs for dairy professionals, and for conducting advanced clinical and applied research. A joint venture between the University of Minnesota College of Veterinary Medicine and the owners of Baldwin and Emerald Dairies in western Wisconsin, TMF houses approximately 400 cows through their dry period (the time from the end of lactation until the next calving) and through the two weeks after calving. The tour will also include a stop at a nearby cow operation. The facility is about one hour from Minneapolis. Please arrive in the hotel lobby 15 minutes prior to departure to board bus, and be sure to eat before you come!!

SAD Undergraduate Evening Informal Mixer: Mall of America

6:00 - 10:00 pm

The Mall of America (Bloomington, MN)

Transportation on your own. Meet in the lobby of the DoubleTree by 5:45 if you need a ride or if you have room for others. Pick up driving/Light Rail directions from the hotel concierge.

The Mall of America (MOA) has it all, including the honor of being the largest mall in the USA! MOA has more than 520 stores, 20 sit-down restaurants, 30 fast food restaurants, 36 specialty food stores, and 14 movie screens. Key attractions include The Park at MOA™, Underwater Adventures® Aquarium, LEGO® Imagination Center, Dinosaur Walk Museum, A.C.E.S. Flight Simulation, NASCAR Silicon Motor Speedway, Bloomingdale's, Macy's, Nordstrom, and Sears. Total store front footage is 4.3 miles! In fact, if a shopper spent 10 minutes browsing at every store, it would take them more than 86 hours to complete their visit to Mall of America! MOA is also accessible by the new Light Rail transportation system.

Sunday, July 9

SAD Midday Mixer and Pizza Party

12:00 Noon

Convention Center, Seasons Room

Ticket Price: no charge, but advance registration is required

Plan to join us for the first official event of the Student Affiliate Division meetings. The mixer is a great way to get some free lunch and get acquainted with other clubs who will be participating in the meetings. Registration is free, but required.

Dairy Quiz Bowl

1:00 pm

Convention Center Rooms 200 HIJ

The Dairy Quiz Bowl invites teams from all universities to participate in this year's event. Seating test will be held immediately following the Midday Mixer and Pizza Party. Once teams are placed, competition will begin and continue throughout the afternoon. The top teams will move onto the final round, which will be held on Sunday evening at 5:00 pm. To enter your club's team, go the meetings section of the ADSA-SAD web site at www.adsa.org/sad.asp/.

SAD Informal Mixer SAD Picnic in the Park

5:30 pm

Lake Harriet (approximately a 5-minute drive from DoubleTree)

Transportation on your own. Meet in the lobby of the DoubleTree if you need a ride or if you have room for others.

Pick up driving directions from the hotel concierge.

Ticket Price: \$4.00

From early June to Labor Day canoeists, bikers, hikers, picnickers, and other residents from throughout the region come to Lake Harriet to hear nightly free concerts at Lake Harriet Bandshell. There is something for everyone—music ranges from Folk, Blues, Jazz, Big Band to Light Rock, Funk, children's music, and much more. Local bands, the Minneapolis Pops Orchestra, and many popular artists, perform the music. The distance around Lake Harriet is 2.99 miles for bikers and skaters and 2.75 miles for walkers and runners. The picnic begins immediately following the Dairy Quiz final round and includes dinner and sodas.

Monday, July 10

Dance Party with the Johnny Holm Band

8:30 pm - 12:30 am

Hilton Minneapolis (ADSA Headquarter Hotel) Salons DEFG

Ticket Price: \$5.00

Rock the night away with old and new friends and the Johnny Holm Band. One of the most requested bands in the upper Midwest, the Johnny Holm Band dedicates each show to the fans, and they do the most of the entertaining. There's never a dull moment when this band hits the stage and rocks, picks, and thunders along non-stop from the first song to the last laugh. Cash bar, free soda bar, and free snacks will be available. This event is open to all meeting attendees, including students, advisors, and anyone else looking for a fun evening. Primary sponsor: the University of Minnesota Gopher Dairy Club. Other sponsors: ADSA and ASAS.

Tuesday, July 11

SAD Career Symposium: Student Job Fair

9:30 - 11:30 am

Convention Center 200H, Exhibit Hall A

This two-part program will begin with a focused seminar that will prepare students for the Job Fair. Students will get useful tips on approaching individuals in their booths, starting a conversation, the right questions to ask, how to close the conversation, ways to follow up the meeting, and more. After this seminar, students will put their new skills to work at the Student Job Fair in the Exhibit Hall. More than 70 companies related to the dairy and animal science industry will be in the Exhibit Hall, so students will have ample opportunity to visit with company reps and inquire about careers and internships that may be available to undergraduate students. Students are encouraged to dress professionally (business casual or better) and bring several copies of their resumes.

SAD Awards Luncheon

11:45 - 2:00 pm

Convention Center Seasons Room

Ticket Price: Professional: \$29, Student: \$20

Plan to attend this year's SAD Awards Luncheon. In honor of ADSA's Centennial, several ADSA Pioneers will be invited to visit with the students about the changes in the association and the industry during their lifetime. And, back by popular demand: be entertained as the student officers go head to head with ADSA Board Members in a mini-dairy quiz bowl. See who really knows more about the history of ADSA and the dairy industry! There are sure to be a few surprises and plenty of laughs along the way. The afternoon will be capped with presentation of student awards and announcement of new SAD officers. Both students and professionals are encouraged to attend. This is a wonderful chance to get to know the next generation of the dairy industry.

SAD Schedule of Events

Saturday, July 8

12:00 pm - 05:00 pm	SAD Tour - Transition Management Facility in Emerald, WI	Meet in Doubletree Lobby
06:00 pm	SAD Informal Event - Mall of America	Meet in Doubletree Lobby

Sunday, July 9

08:00 am - 05:00 pm	Student Dairy Clubs Set Up Exhibits	Convention Center, Exhibit Hall A
11:00 am - 12:00 pm	SAD Officers and Advisor Meeting	Convention Center, 200 J
12:00 pm - 01:00 pm	SAD Midday Mixer & Pizza Party	Convention Center, Seasons
01:00 pm - 05:00 pm	Dairy Quiz Bowl Seating/Preliminary Rounds	Convention Center, 200 H, 200 I
05:00 pm - 05:30 pm	Dairy Quiz Bowl Final Round	Convention Center, 200 I
05:30 pm	SAD Picnic at Lake Harriet	Pavilion near Band Shell
07:00 pm	ADSA Opening Session & Reception	Convention Center, Ballroom A

Monday, July 10

07:00 am - 08:15 am	Student Dairy Clubs Set Up Exhibits	Convention Center, Exhibit Hall A
08:30 am - 09:15 am	SAD Business Meeting	Convention Center, 200 H
09:30 am - 10:30 am	SAD Judging of Yearbooks, Scrapbooks, Annual Reports	Convention Center, 200 I
09:30 am - 10:30 am	Interviews for Outstanding Student and Advisor Awards	Convention Center, 200 J
09:30 am - 10:30 am	SAD Activities Symposium	Convention Center, 200 H
11:00 am - 04:15 pm	SAD Undergraduate Paper Presentations	Convention Center, 200 H
08:30 pm - 12:30 am	Dance: Johnny Holm Band	Hilton Minneapolis, Salons DEFG

Tuesday, July 11

08:30 am - 09:30 am	SAD Business Meeting - Election of Officers	Convention Center, 200 H
09:30 am - 10:15 am	SAD Career Symposium: Making the Most of a Job Fair	Convention Center, 200 H
10:30 am - 11:30 am	SAD Job Fair	Exhibit Hall, Convention Center
11:45 pm - 02:00 pm	SAD Awards Luncheon	Convention Center, Seasons
02:00 pm - 03:00 pm	SAD Award & Club Photos	Convention Center, 200 I
02:30 pm - 03:30 pm	SAD Committee Meeting - Old and New Officers & Advisors	Convention Center, 200 H
03:00 pm - 05:00 pm	Open to Attend Scientific Sessions	
02:00 pm - 05:00 pm	Teardown SAD Exhibits	Convention Center, Exhibit Hall A
07:00 pm - 10:00 pm	ADSA Awards Ceremony, Ice Cream Social and Fun Auction/Raffle	Hilton Minneapolis, Salons DEFG

Wednesday, July 12

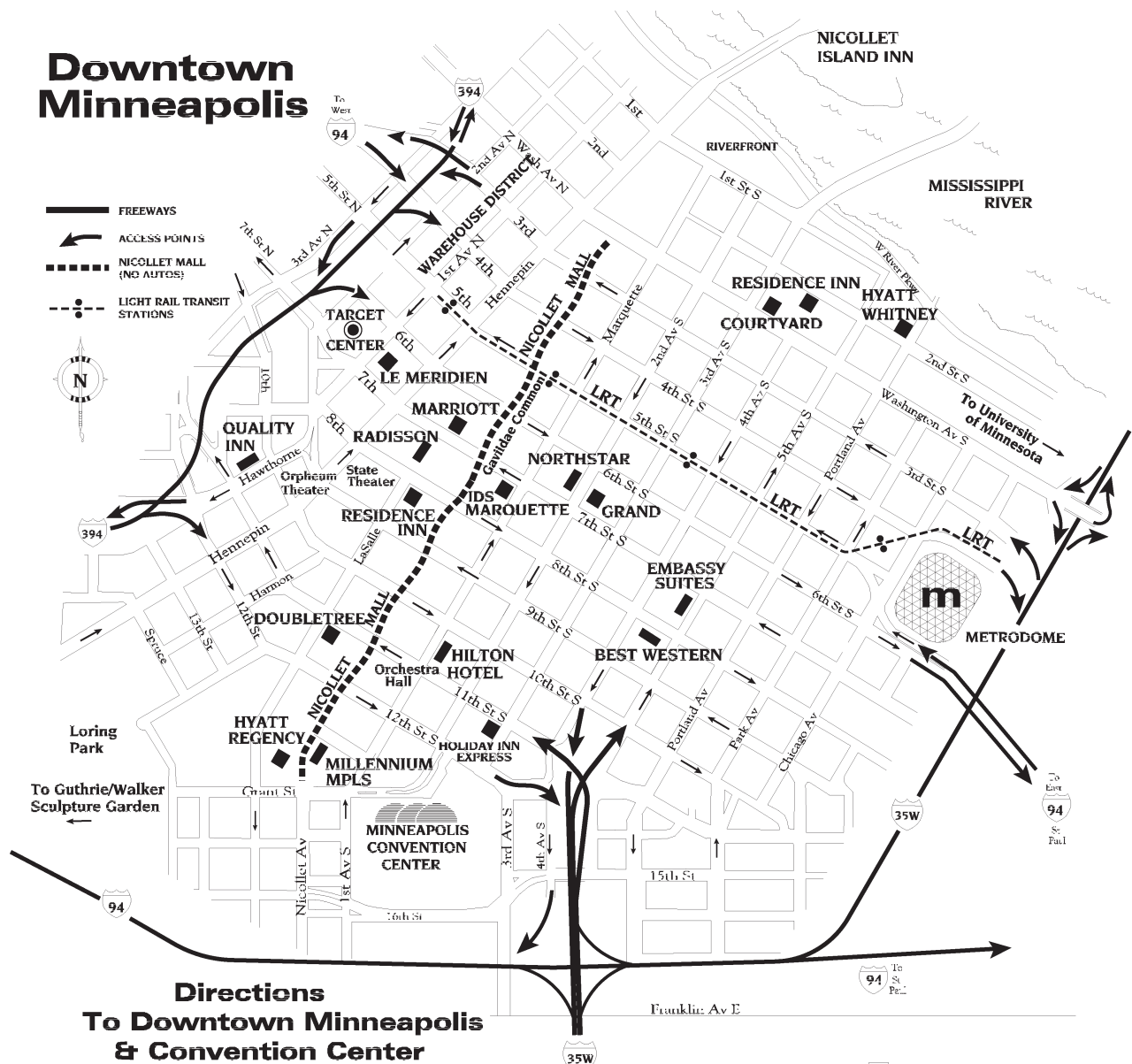
07:30 am - 05:00 pm	Scientific Posters, Sessions and Exhibits	Convention Center
---------------------	---	-------------------

Thursday, July 13

07:30 am - 12:00 pm	Scientific Posters and Sessions	Convention Center
---------------------	---------------------------------	-------------------

Downtown Minneapolis #1

Downtown Minneapolis



Directions To Downtown Minneapolis & Convention Center

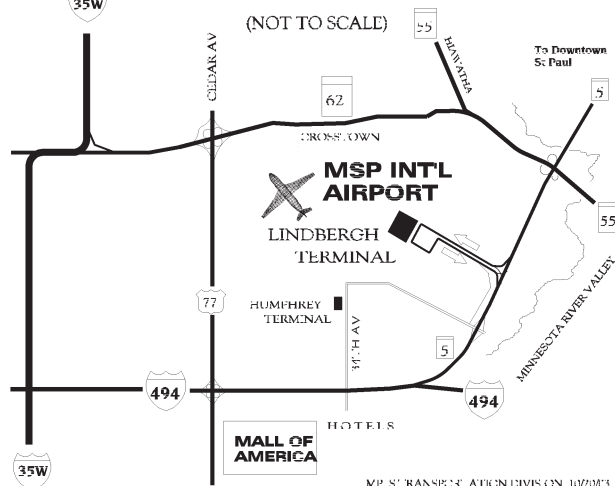
FROM THE WEST (I-94): Take the 4th Street exit from I-94 and proceed to 2nd Ave. So. (Do NOT turn right onto 2nd Avenue North.) Turn right on 2nd Ave. So. and go eight blocks to Convention Center.

FROM THE SOUTH (I-35W): Follow downtown exit signs to the 11th Street exit and follow 11th Street to 2nd Ave. So. Turn left on 2nd Ave. and go one block to Convention Center.

FROM THE EAST (I-94): Take the 11th Street exit from I-94. Follow 11th St. to 2nd Ave. So. Turn left on 2nd Ave. So. and go one block to Convention Center.

FROM THE NORTH (I-35W): Take the I-94 exit. Follow I-94 to the 11th St. exit (NOT 11th Avenue exit). Follow 11th Street to 2nd Ave. So. Turn left on 2nd Ave. and go one block to the Convention Center.

FROM THE AIRPORT MAIN TERMINAL: Take Hwy. 55 exit from the airport. Follow Hwy. 55 west to Minneapolis. This will become Hwy 62 west. Follow Hwy. 62 to I-35W north. Take I-35W north to Minneapolis downtown exits. Then take the 11th Street exit. Follow 11th St. So. to 2nd Ave. So. Turn left on 2nd Ave. So. and go one block to the Convention Center.

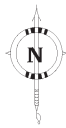


M.P.S. TRANSPORTATION DIVISION 10/2003

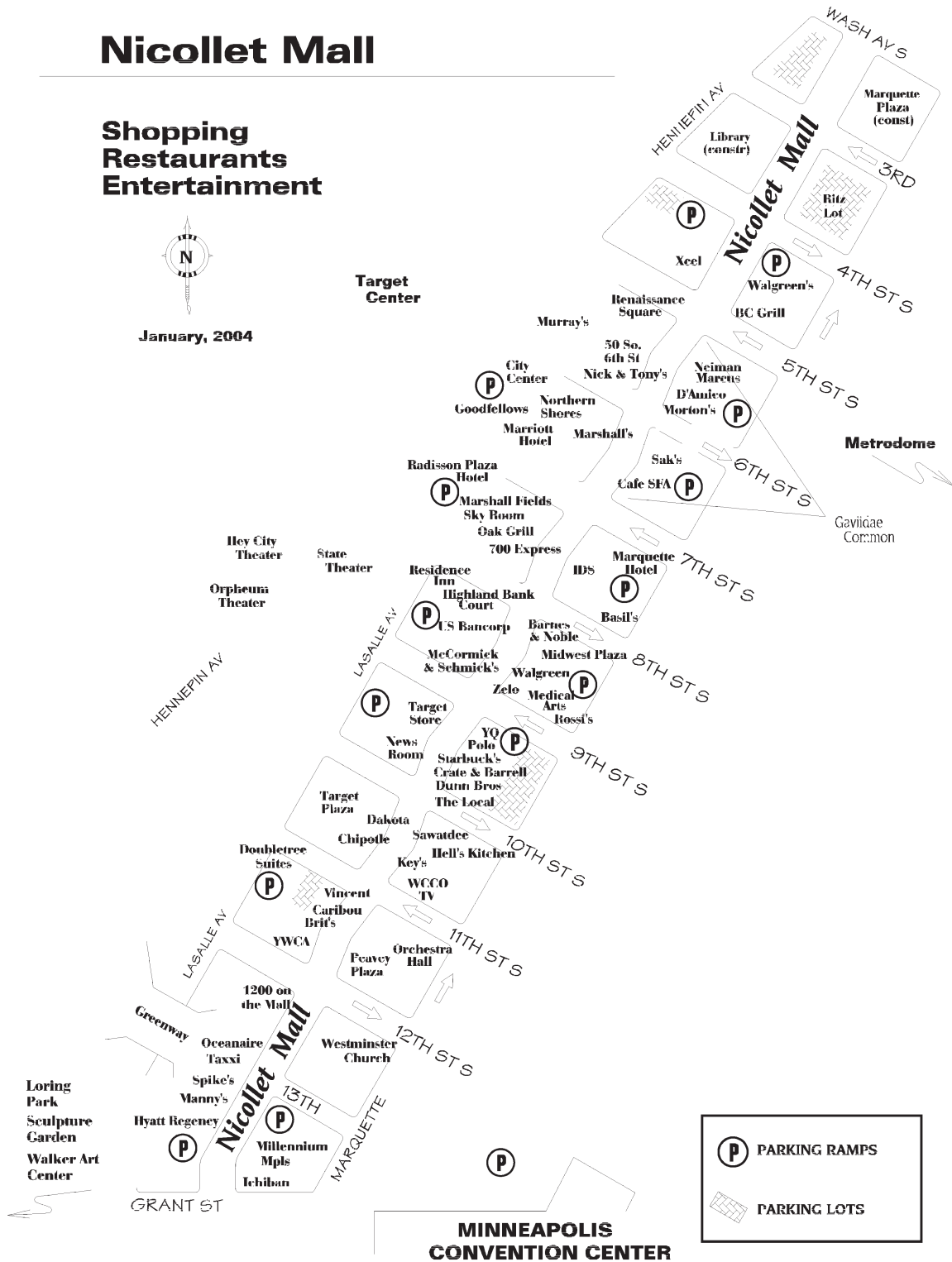
Downtown Minneapolis #2

Nicollet Mall

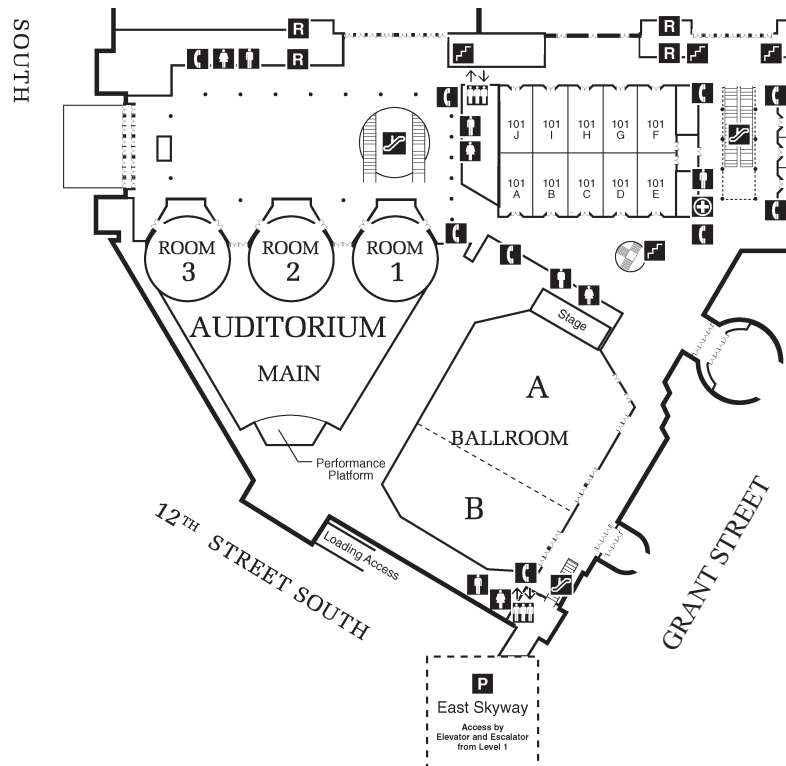
Shopping
Restaurants
Entertainment



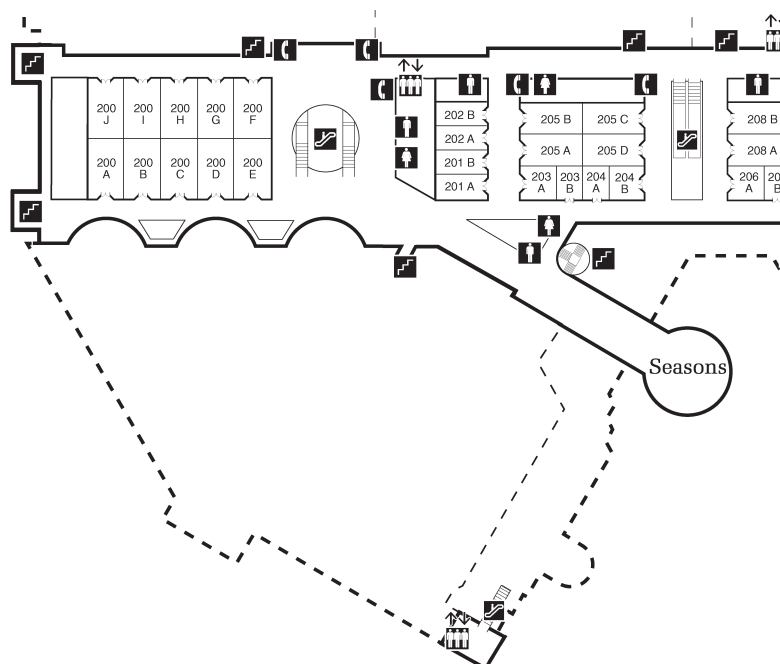
January, 2004



Minneapolis Convention Center Level 1

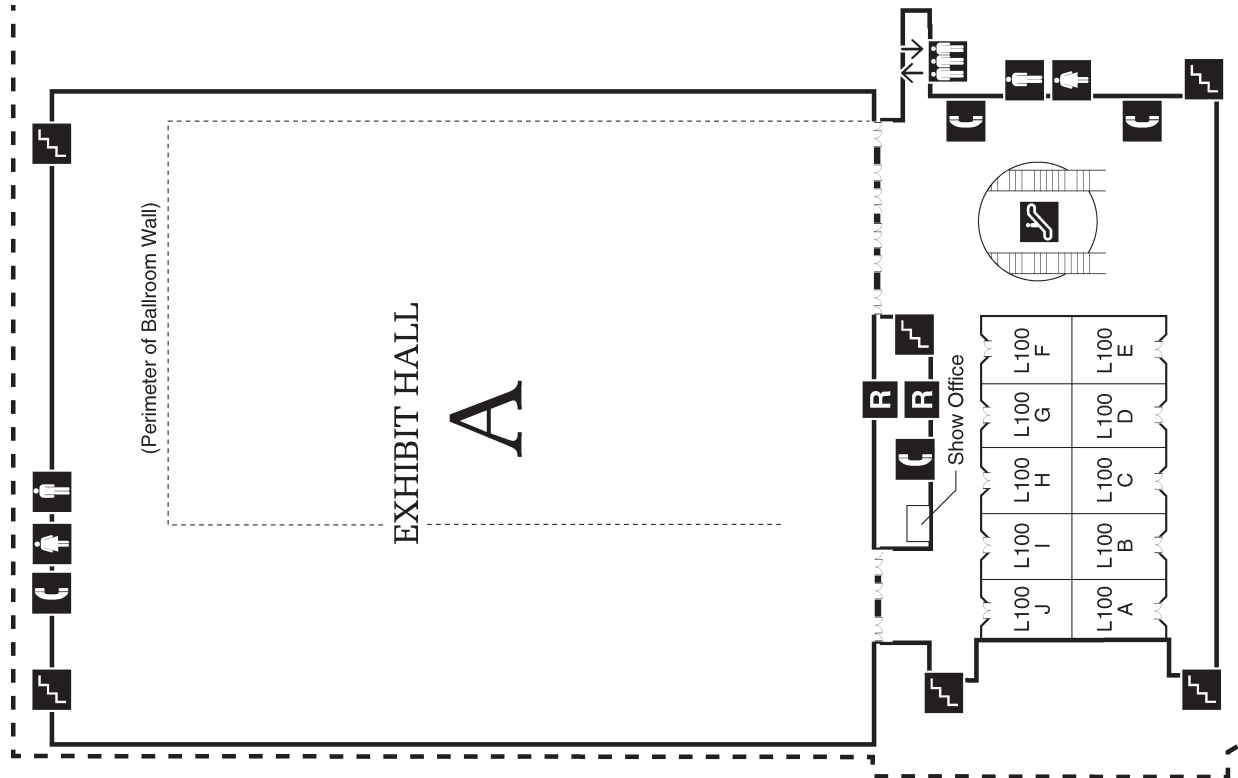


Minneapolis Convention Center Level 2



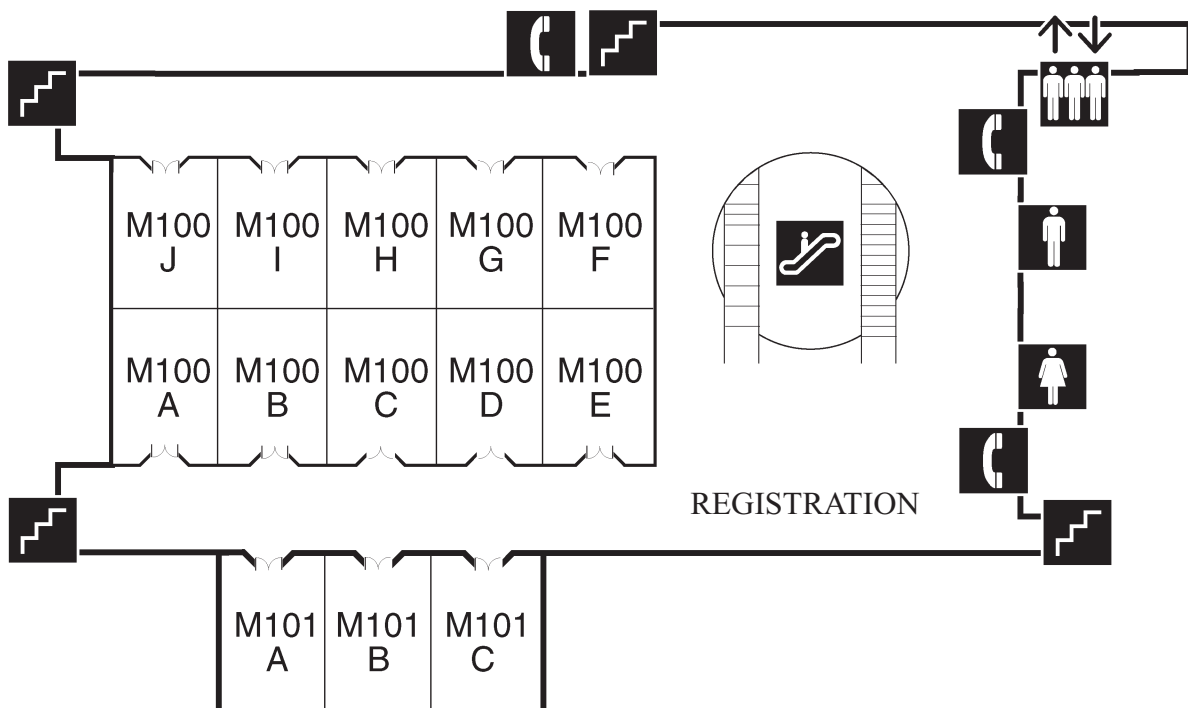
Minneapolis Convention Center

Lower Level



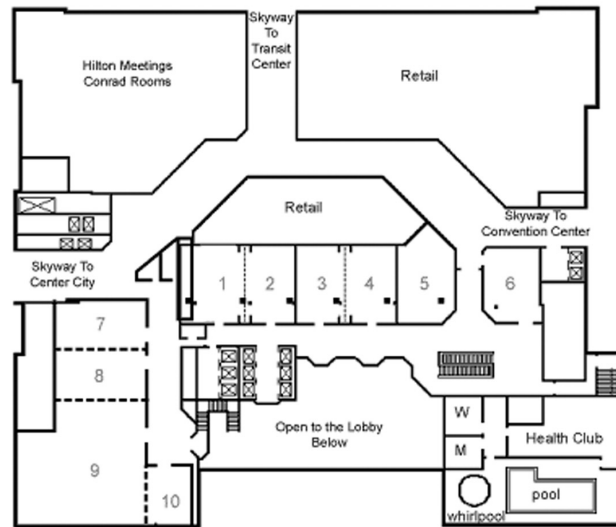
Minneapolis Convention Center

Mezzanine



HILTON

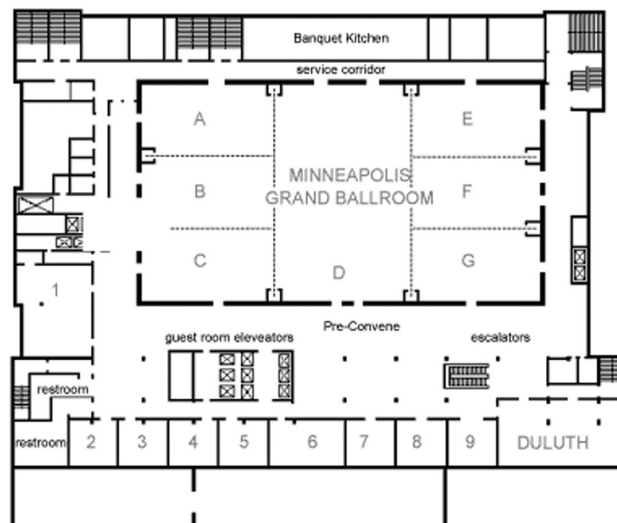
HILTON MINNEAPOLIS - SECOND FLOOR



1. MARQUETTE
2. LASALLE
3. HENNEPIN
4. CARVER
5. RAMSEY
6. NICOLLET

7. SYMPHONY BALLROOM I
8. SYMPHONY BALLROOM II
9. SYMPHONY BALLROOM III
10. SYMPHONY BALLROOM IV

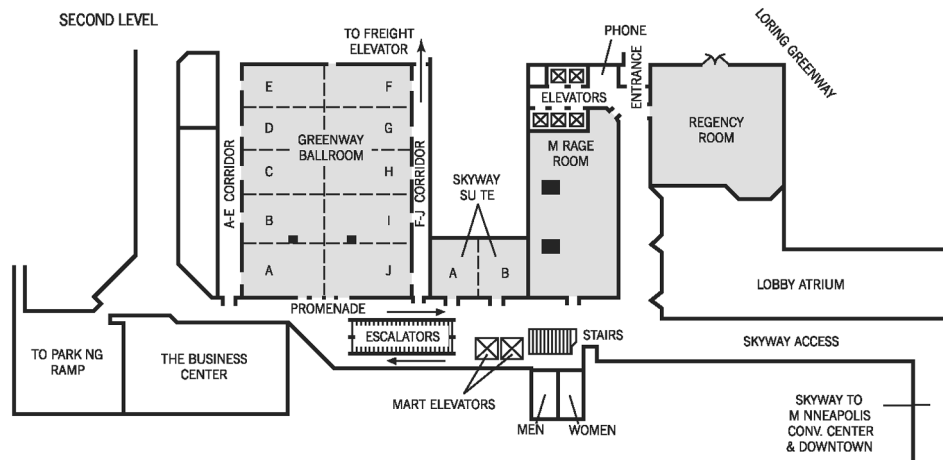
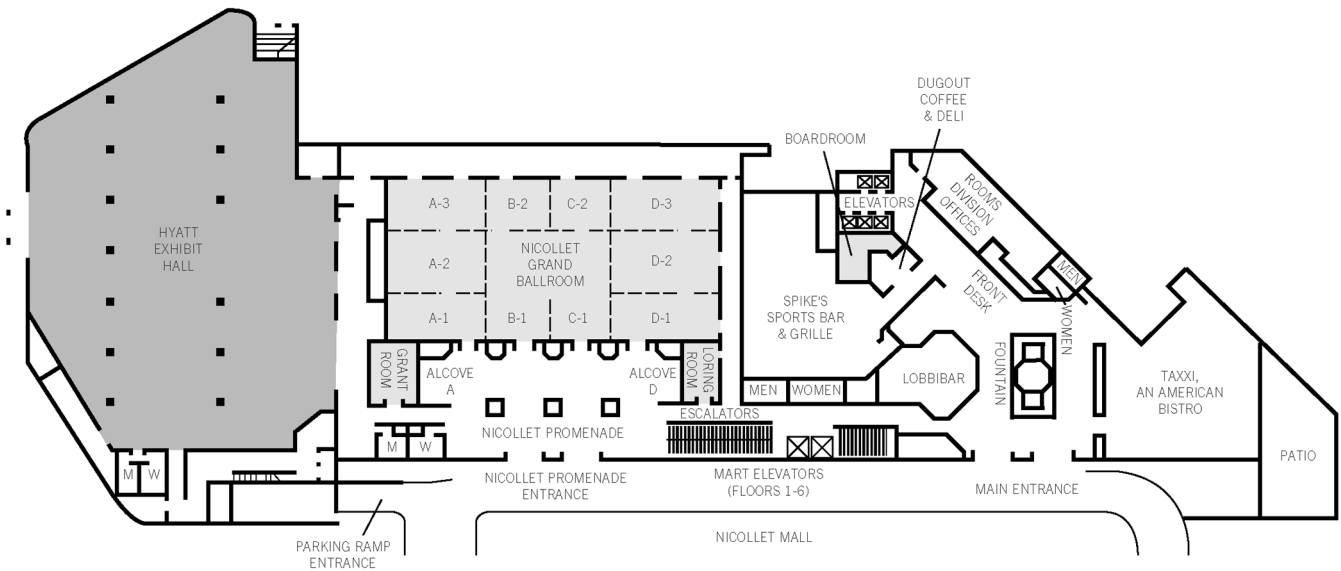
HILTON MINNEAPOLIS - THIRD FLOOR



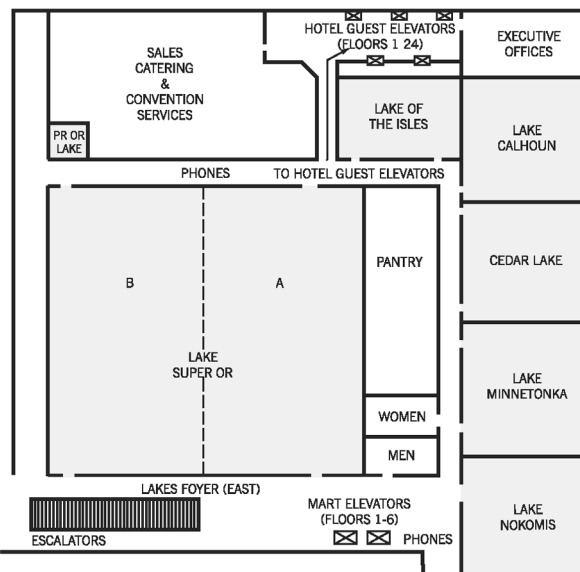
1. ROCHESTER
2. BOARD ROOM 1
3. BOARD ROOM 2
4. BOARD ROOM 3
5. DIRECTOR'S ROW 1
6. RED WING ROOM

7. DIRECTOR'S ROW 2
8. DIRECTOR'S ROW 3
9. DIRECTOR'S ROW 4

HYATT



FIFTH LEVEL/ LAKE SUITES CONFERENCE CENTER



Thank you to the 2006 ADSA - ASAS Joint Meeting Sponsors!

(as of 5-30-2006)

PLATINUM

Elanco Animal Health
Pfizer Animal Health

GOLD

Ajinomoto Co., Inc. and Ajinomoto
Heartland LLC
Alpharma
Diamond V Mills
European Association for Animal
Production (EAAP)
Monsanto Company
USDA-NRI

SILVER

Arm & Hammer Animal Nutrition
Cargill Animal Nutrition
Schreiber Foods, Inc.
The Iams Company
West Central

BRONZE

Fort Dodge Animal Health
Lucta USA, Inc.
Milk Products, Inc.
National Pork Board
Nestle Purina PetCare Company
Novus International, Inc.
Prince Agri-Products, Inc.
Ralco Nutrition, Inc.
U.S. Dairy Forage Research Center
(USDA-ARS)

DONORS

Alltech, Inc.
American Veal Association's Veal Quality
Assurance Program
Asociacion Mexicana de Produccion
Animal A.C. (AMPA)
Animal Ag Alliance
BASF Plant Science/Ex Seed Genetics
Brewster Cheese
Intervet
Land O'Lakes Purina Feed LLC
Newsham Genetics
Pancosma USA, Inc.
Pig Improvement Company
Select Sires, Inc.
USDA, Agricultural Research Service,
U.S. Sheep Experiment Station
Zinpro

