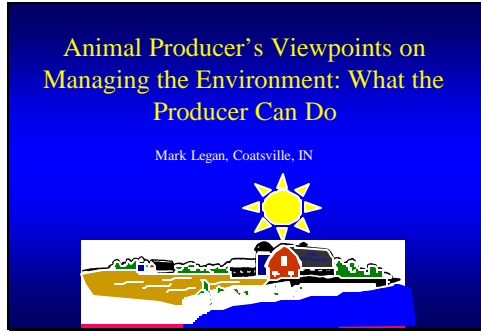
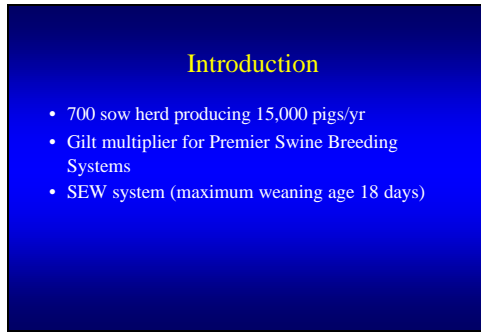


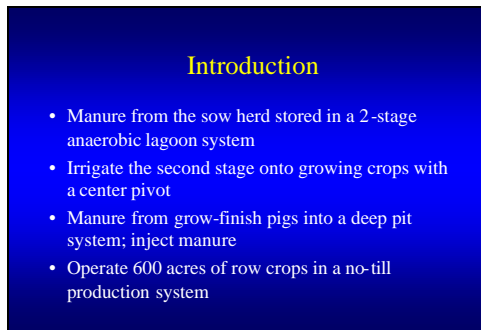
Slide 1



Slide 2



Slide 3



Slide 4

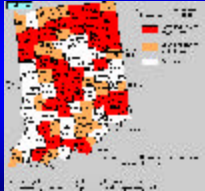
Introduction

- To keep pace with population growth, world food supplies must double from 1995 to 2025 (CAST, 1999).
- Over 1 million acres of US farmland is lost to urban development each year (1997-American Farmland Trust)
- During the 90s, Indiana is losing 100,000 acres of farmland per year to development

Slide 5

Urban-Rural Conflict in IN

| Percent of land in farm use: | |
|------------------------------|-----|
| 1940 | 86% |
| 1974 | 73% |
| 1992 | 68% |
| 2020 | ? |



Slide 6

Indiana Confined Feeding Control Law

- First adopted in 1971 as an approval program with zero discharge requirements
- Effects producers with 300 hd. cattle, 600 hd swine and sheep, 30,000hd poultry
- Since 1993, stricter requirements (MMP) This year, added greater restrictions and adopted rule as a 5 yr. permit program

Slide 7

Challenges in Managing the Environment

- Separating environmental issues from social issues
- Predicting profitability
- Developing better application equipment
- Understanding global competitive advantages

Slide 8

Issues Confronting Producers

- Air quality and odor regulations
- Defining the phosphorus standard
- Implementing new rules and regulations
- Rules will adversely affect the small operations and drive the industry to more consolidation

Slide 9

What a Producer Can Not Do in Managing the Environment

- Make pigs not stink
- Control the weather
- Replace all existing facilities
- Control the location of new neighbors


Slide 10

What a Producer Can Do to Manage the Environment

- Be a good manager
- Properly select the farm site
- Treat manure as a resource
- Be a good neighbor
- Producers will need to be proactive

Slide 11

Questions ???

A photograph of two piglets' faces, one slightly behind the other, looking towards the camera. The image is framed by a green recycling symbol (three chasing arrows forming a triangle) on a light gray background. The entire slide has a blue gradient background.